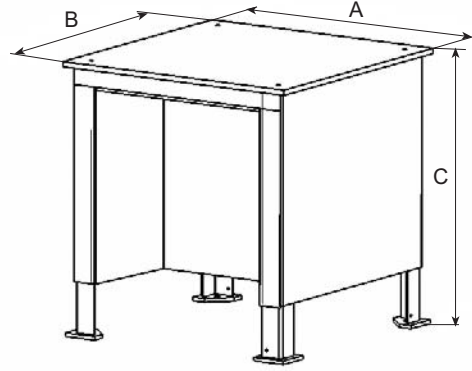


THE PRESS TABLES

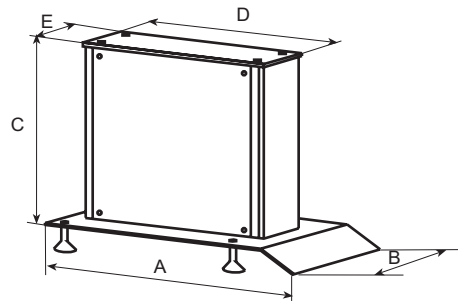
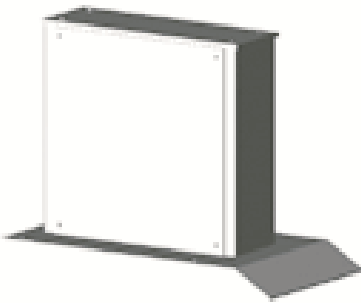
Pres masaları



Type	A	B	C
Tip			
M1-01	600	600	750
M1-02	750	750	750
M1-04	750	750	750
M1-08	750	750	750
M1-15	750	750	750
M1-30	850	850	750
M1-50	850	850	750

The tables are designed for 2 column and 4 column presses.

Masalar 2 sütunlu ve 4 sütunlu presler için dizayn edilmiştir.



Type	A	B	C	D	E
Tip					
M2 01	500	600	650	350	140
M2 02	600	600	580	455	185
M2 04	690	600	550	540	185
M2 08	815	700	490	685	220
M2 15	935	700	440	785	270
M2 30	915	700	380	920	330
M2 50	1000	700	340	1005	350

The foot is designed for C frame presses and the height between CP series with bottom plate is 800mm.

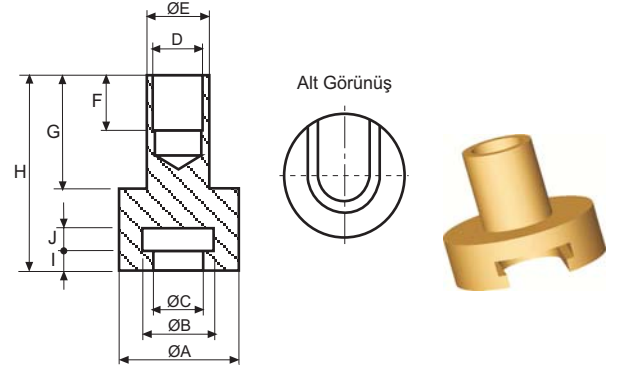
Pres ayakları C pres gövdeleri için dizayn edilmiş olup, yer ile pres gövdesi arası 800mm dir.

ACCESSORIES

Aksesuarlar

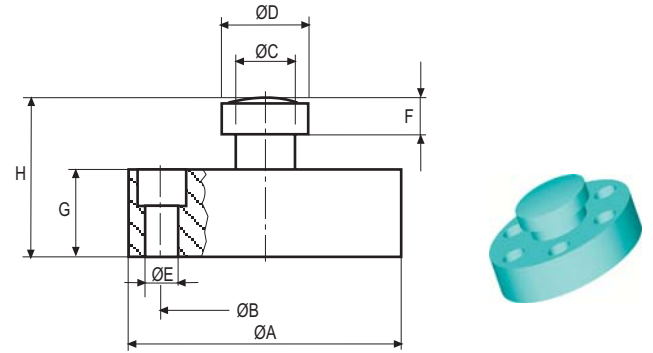
Fixing part (Please tighten with loctite) : Until 50 tons.
Sabitleme parçası (Lütfen loctite ile sıkınız) : 50 ton'a kadar.

Tool holding fixture 01 Sabitleme parçası		Measurements in mm / Ölçüler mm dir									
Type	A	B	C	D	E	F	G	H	I	J	
AC 01 01	35	23	16	M12X1.5	16	15	28	46	5	7	
AC 02 01	35	23	16	M12X1.5	16	15	28	46	5	7	
AC 03 01	45	23	16	M16X1.5	20	15	28	46	5	7	
AC 04 01	65	33	26	M22X2	30	24	36	58	5	7	
AC 05 01	65	49	33	M30X2	45	29	54	82	8	10	
AC 06 01	75	49	33	M30X2	50	2	54	82	8	10	
AC 07 01	85	59	41	M39X2	56	9	56	88	10	12	
AC 08 01	95	75	52	M42X2	63	39	68	106	13	15	



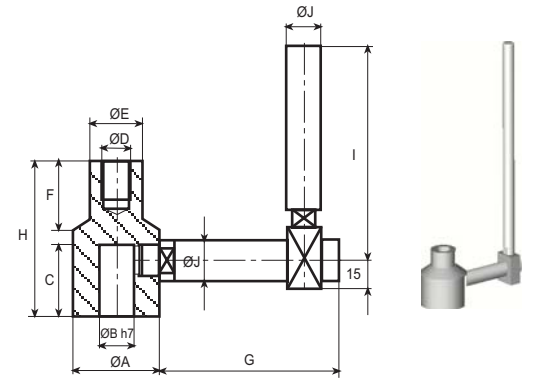
They are using with AC- -01 parts. Until 50 tons.
AC- -01 parçaları ile beraber kullanılırlar. 50 ton'a kadar.

Tool holding fixture 02 Sabitleme parçası		Measurements in mm / Ölçüler mm dir							
Type	A	B	C	D	E	F	G	H	
AC 01 02	67	50	16	23	6.5	7	15	28	
AC 02 02	67	50	16	23	6.5	7	15	28	
AC 03 02	67	50	16	23	6.5	7	15	28	
AC 04 02	67	50	26	33	6.5	7	15	28	
AC 05 02	98	75	33	49	11	10	20	39	
AC 06 02	98	75	33	49	11	10	20	39	
AC 07 02	98	75	41	59	11	12	24	46	
AC 08 02	98	75	52	75	11	15	24	52	



Anti-rotation fixture which has threads on the rod until 50 tons.
Dönmezlik parçası 50 ton'a kadar kullanılır.

Tool holding fixture 03 Dönmezlik parçası		Measurements in mm / Ölçüler mm dir									
Type	A	B	C	D	E	F	G	H	I	J	
AC 01 03	35	20	32	M12X1.5	16	28	80	46	210	12	
AC 02 03	35	20	32	M12X1.5	16	28	80	46	210	12	
AC 03 03	45	20	32	M16X1.5	20	28	95	46	210	12	
AC 04 03	65	20	32	M22X2	30	36	112	58	225	16	
AC 05 03	65	40	50	M30X2	45	54	115	82	275	20	
AC 06 03	75	40	50	M30X2	50	54	132	82	275	20	
AC 07 03	85	40	50	M39X2	56	56	152	88	300	25	
AC 08 03	95	40	50	M42X2	63	68	160	106	325	25	



For your special assembly connection plate : For S-SK-PS type cylinders until 30 tons.
Özel bağlantı parçası : S-SK-PS tipi silindirlere 30 ton'a kadar kullanılır.

Front mounting flange Onbağlantı flanşı		Measurements in mm / Ölçüler mm dir							
Type	A	B	C	D	E	F	G	H	
AF 01 00	88	55	30	19	3	6.5	40	75	
AF 02 00	88	62	30	19	3	6.5	40	75	
AF 03 00	124	75	40	24	3	9	54	105	
AF 04 00	144	85	50	24	4	9	64	125	
AF 05 00	175	112	70	29	4	11	88	156	
AF 06 00	220	136	75	29	5	17	100	195	
AF 07 00	270	170	100	36	5	21	132	255	

