

move faster and be stronger  
schneller und stärker sein

# dkPOWER

---

---

---

---



We Process with Compressed air...

Successfully for more than two decades. Put more precisely; we utilise the energy contained in compressed air to control movements as easy as we can. And of course we also provide all the necessary accessories to ensure that the energy goes where it is supposed to go. In stead of wasting it we use the energy to accelerate productivity which is the main idea in our presses. MOVE FAST AND BE STRONG has been our slogan, but by years passing in the global competitive industry we are aware of we have to MOVE FASTER AND BE STRONGER...

Sadece basınçlı hava ile çalışıyoruz...

20 yıldan fazla zamandır basınçlı hava ile uğraşıyoruz. Özet olarak; basınçlı hava içindeki enerjiyi en kolay şekilde hareketin kontrolünde kullanıyoruz. Tabi ki enerjinin gitmesi gereken yere yönlendirilmesi için gerekli bütün aksesuarları da temin etmekteyiz. Enerjiyi boşa harcamak yerine onu preslerimizde ana fikrini oluşturan, üretkenliği arttırmakta kullanıyoruz. HIZLI HAREKET ET VE GÜÇLÜ OL parolamız olup, global endüstride rekabet içinde geçen yıllar sonunda DAHA HIZLI HAREKET edip DAHA GÜÇLÜ OLMAMIZ GEREĞİNİNDE farkındayız.

# dkPOWER **hydropneumatic cylinders** hidropnömatik silindirleri

High-tech power for all forming applications from 0,6-100 tons.

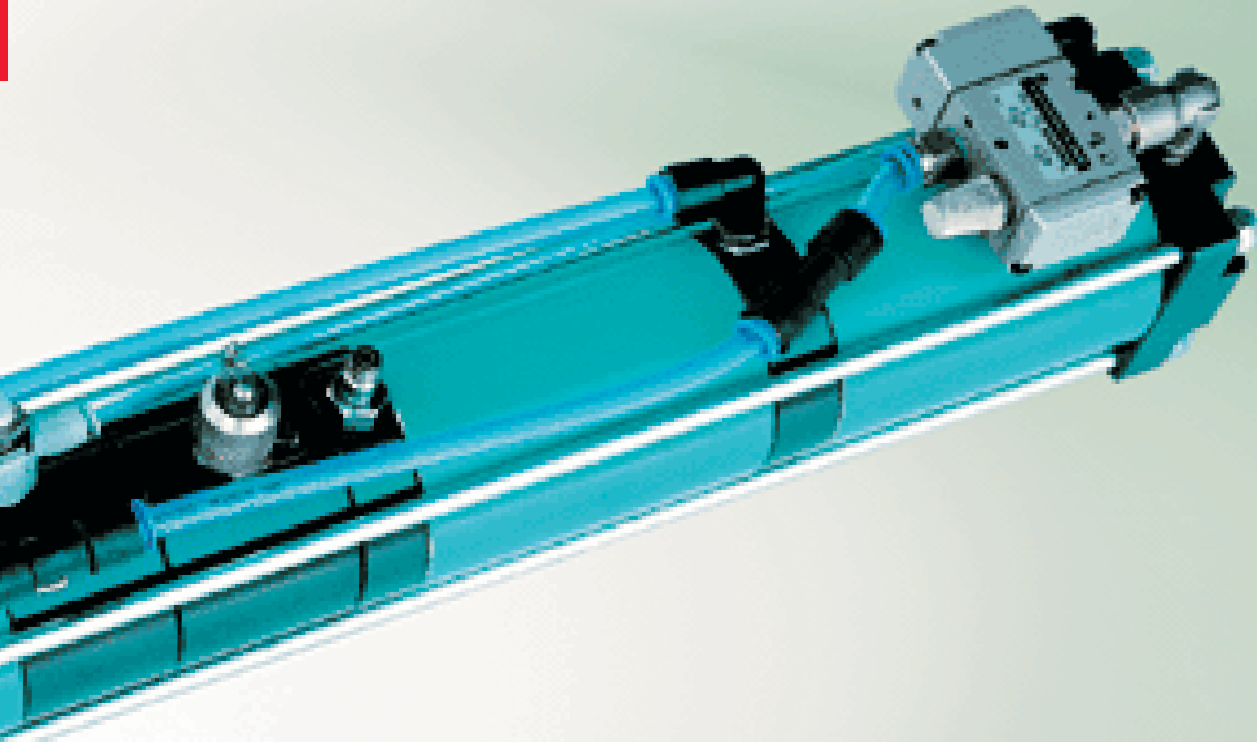
0,6-100 ton'a kadar bütün form verme operasyonlarında yüksek teknoloji.

dkPOWER is an air operated cylinder, containing closed hydraulic oil circuit that helps to reach the desired forces with automaticly resistance activated power stroke. The actuations are very simple similar to a double acting pneumatic cylinder. This technology combines the benefits of pneumatics and hydraulics and the following advantages ;

dkPOWER istenilen kuvvetlere otomatik direnç aktivasyonlu güç stroğu sayesinde içindeki kapalı devre yağın yardımıyla sadece hava tahriğiyle ulaşır. Kontrol sistemleri aynen çift etkili bir pnömatik silindirde olduğu gibi çok basittir.



- Fast
- Powerful
- Quality
- Cost-Saving
- Quiet
- Wear resistant
- Low maintenance
- Universal
- Safe production
- Soft Touch
- Hızlı
- Güçlü
- Kaliteli
- Maliyet Tasarrufu
- Sessiz
- Aşınma dayanımlı
- Az bakım gerektirir
- Çok amaçlı kullanım
- Güvenli Üretim
- Yumuşak temas



dkPOWER hydro-pneumatic cylinders are used wherever linear force is required over a stroke up to 80mm.

Typical application are :

dkPOWER hidropnömatik silindirleri iş stroğu 80 mm'ye kadar lineer güç gereken yerlerde kullanılır.

Tipik uygulamaları:



## Hydraulic systems



- Dirty working environment (Oil leakage)
- Slow motion and low cycles
- On a large working area
- Constant working stroke
- High energy
- High noise

## Hidrolik sistemler

- Kirli çalışma ortamı (Yağ kaçaqları)
- Yavaş hareket ve düşük çevrim sayısı
- Geniş hacimli çalışma ortamı
- Sabit çalışma stroğu
- Yüksek enerji tüketimi
- Yüksek gürültü seviyesi

## Pneumatic systems



- You can use until 2 tons power
- Fat construction
- High air consumption.
- You can't get smooth power surface
- You can't adjust power stroke
- High noise

## Pnömatik sistemler

- Pratikte 2 ton kuvvete kadar kullanım
- Şişman konstrüksiyon
- Yüksek hava tüketimi
- Dengesiz güç dağıtım yüzeyi
- Ayarsız iş stroğu
- Yüksek gürültü seviyesi

## dkPOWER-Hydropneumatic cylinders

- Large power range ( 0,6 –100 ton)
- No, hydraulic units. It needs only shop- air !
- Automaticly resistance activated power stroke
- Rapid approach and retract motion
- Soft touch at power stroke
- Strokes can be changeable
- Cost-saving
- Clean workplace
- Low noise
- Easy control systems
- Easy assembly
- Easy adaptation in to automation systems
- Easy maintenance

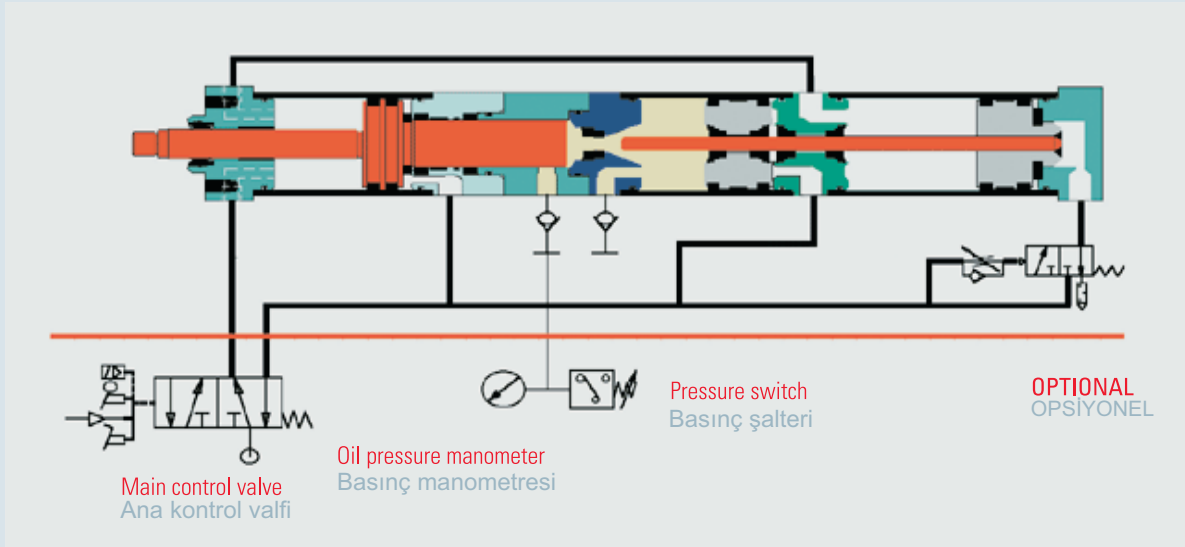
## dkPOWER-Hidropnömatik silindirleri

- Geniş çalışma aralığı (0,6 – 100 ton)
- Hidrolik ünite yok ! Sadece basınçlı sistem havasına ihtiyaç var.
- Otomatik aktivasyonlu iş stroğu
- İş anında yumuşak temas
- Değiştirilebilir iş stroğu
- Ekonomik
- Temiz çalışma ortamı
- Düşük gürültü düzeyi
- Kolay kumanda sistemi
- Otomasyon sistemlerine kolay adaptasyon
- Bakımı kolay



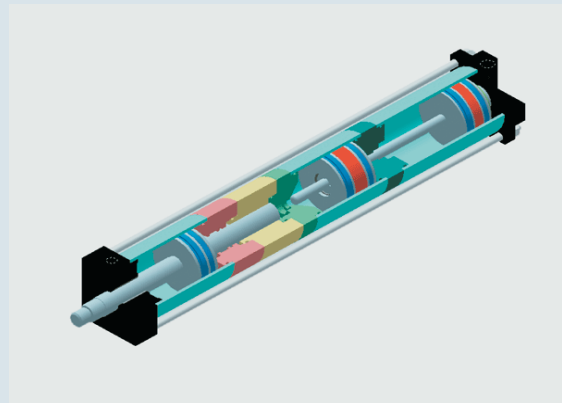
dkPOWER which is a completely integrated power drive contains both pneumatic rapid motion and hydraulic power.

dkPOWER tamamen entegre bir güç ünitesidir. pnömatik gibi hızlı hidrolik gibi güçlü hareket eder.



Absencesy of the spring in our cylinders build more safer and robust structure. The springs used at high stroke frequencies have a limited life expectation and could damage the cylinder while breaking the complete cylinder.

Silindirlerimizin iç yapısında herhangi bir yayın bulunmayışı daha sağlam ve güvenli bir yapı oluşmasını sağlar. Yüksek stok frekanslarıyla kullanılan yayların ömürleri sınırlıdır ve kırılırlarken silindire ciddi hasarlar verebilir.

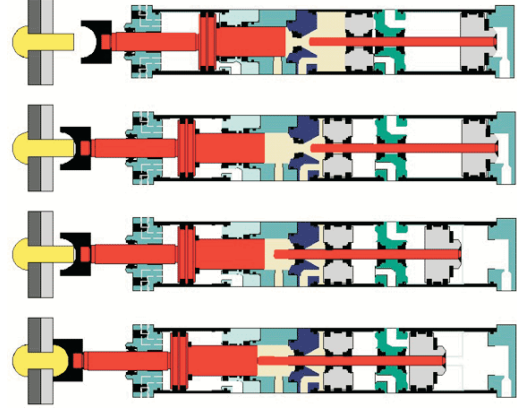


dkPOWER hydropneumatic cylinder operating principle divides the total stroke into a fast approach, a power stroke and a return stroke.

dkPOWER hidropnömatik silindirlerinde çalışma prensibi, hava tahrikli yaklaşma, hidropnömatik güç stroğu ve hava tahrikli geri dönüş stroğu adımlarından oluşmaktadır.

# dkPOWER

## hydropneumatic cylinders hidropnömatik silindir



### Sequence of operations

#### Fast approach

When the main control valve switches the compressed air flows into the piston chamber. The working piston and adjustment piston extend with low force and high speed. The adjustment piston pushes the oil into piston chamber. The working piston takes its place in the working piston.

#### Power Stroke

The compressed air passes through speed control valve and switches the 3/2 way valve which opens the air way to the intensifier piston chamber. Intensifier piston extends and when reaching the high pressure valve, it compresses the oil to reach the working pressure. The working piston must touch the material for the oil compression to be successful. That is what we call automatic resistance activated power stroke.

#### Return stroke

The main control valve switches to its starting position. The air is exhausted through the 3/2 way valve. The working piston and the adjustment piston return to their starting position with high speed.

### Operasyon dizisi

#### Hızlı yaklaşma

Ana kontrol valfi açıldığında basınçlı hava piston bölgesine akar. 1.piston az bir kuvvet ve yüksek hızla ileri hareket eder. 2.piston yağı 1.piston bölgesine öter. 1.piston çalışma pozisyonun daki yerini alır.

#### İş stroğu

Basınçlı hava hız ayar valfinden geçerek basınç yükseltme bölgesine giden hava yolunu açan 3/2 yön valfini tetikler. Buster pistonu ilerler ve yüksek basınç keçesini geçtikten sonra yağı çalışma bölgesine sıkıştırır. Yağın sıkıştırılabilmesi için 1.pistonun iş parçasına dayanması gereklidir. Bu direnç aktivasyonlu otomatik güç stroğunun ta kendisidir.

#### Geri dönüş stroğu

Ana kontrol valfi başlangıç pozisyonuna getirildiğinde hava 3/2 yön valfi üzerinden tahliye edilir. 1.piston ve buster pistonu başlangıç pozisyonlarına hızlı bir şekilde geri dönerler. Sistemimizin kullanımı neticesinde enerji tüketimi azalır.



## dkPOWER – Hydropneumatic cylinders manufacturing program dkPOWER – Hidropnömatik silindirleri üretim programı



### Type S

Total strokes  
Included power strokes  
Force  
Operating pressure  
Special execution

Power stroke limitation  
(optional)

### Tip S

Toplam strok : 50-400mm  
Güç stroğu : 5-80mm  
Kuvvet : 0.5-100 ton  
Operasyon basıncı : 2-10 bar  
Özel uygulama basıncı : Full forced reached with  
6 or 10 bar operating pressure  
Max güce 6 veya 10 bar'lık hava  
basıncında ulaşır

Güç stroğu kısıtlaması  
(opsiyonel) : Possible Mümkün



### Type SA

Total strokes  
Included power strokes  
Force  
Operating pressure  
Special execution

Power stroke limitation  
(optional)

### Tip SA

Toplam strok : 50-400mm  
Güç stroğu : 5-80mm  
Kuvvet : 0.5-100 ton  
Operasyon basıncı : 2-10 bar  
Özel uygulama basıncı : Full forced reached with  
6 or 10 bar operating pressure  
Max güce 6 veya 10 bar'lık hava  
basıncında ulaşır

Güç stroğu kısıtlaması  
(opsiyonel) : Possible Mümkün



### Type SK

Total strokes  
Included power strokes  
Force  
Operating pressure  
Special execution

Power stroke limitation  
(optional)

### Tip SK

Toplam strok : 50-400mm  
Güç stroğu : 5-80mm  
Kuvvet : 0.5-50 ton  
Operasyon basıncı : 2-10 bar  
Özel uygulama basıncı : Full forced reached with  
6 or 10 bar operating pressure  
Max güce 6 veya 10 bar'lık hava  
basıncında ulaşır

Güç stroğu kısıtlaması  
(opsiyonel) : Possible Mümkün



### Type SKA

Total strokes  
Included power strokes  
Force  
Operating pressure  
Special execution

Power stroke limitation  
(optional)

Total stroke limitation

### Tip SKA

Toplam strok : 50-400mm  
Güç stroğu : 5-80mm  
Kuvvet : 0.5-50 ton  
Operasyon basıncı : 2-10 bar  
Özel uygulama basıncı : Full forced reached with  
6 or 10 bar operating pressure  
Max güce 6 veya 10 bar'lık hava  
basıncında ulaşır

Güç stroğu kısıtlaması  
(opsiyonel) : Possible Mümkün

Toplam strok kısıtlaması

# dkPOWER type S 6 bar series, 0.6-100 tons

# dkPOWER tip S 6 bar serisi, 0.6-100 ton

## type S

Total strokes  
Power strokes  
Force  
Operating pressure  
Special execution

## typ S

Toplam strok : 50-400mm  
Güç stroğu : 5-40mm  
Kuvvet : 0.5-100 ton  
Operasyon basıncı : 2-6 bar  
Özel uygulama basıncı : Full forced reached with 6 bar operating pressure  
Max güce 6 bar'lık hava basıncında ulaşır

Power stroke limitation (optional)

Güç stroğu kısıtlaması (opsiyonel)

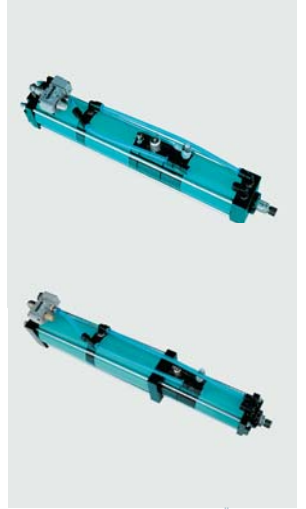
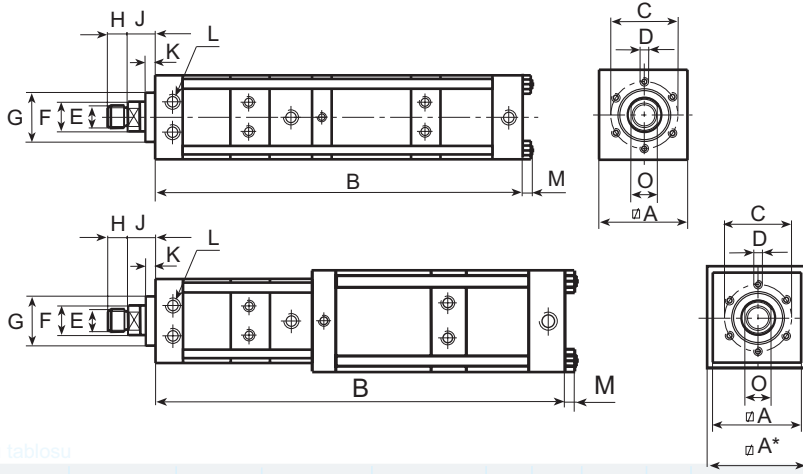
: Possible Mümkün

### Sample order / Sipariş örneği

06 S01 - 100 - 10

Power stroke  
Total stroke  
Type  
Max. working pressure

Güç stroğu  
Toplam strok  
Tip  
Max. çalışma basıncı



Measurements in mm / Ölçüler mm dir

### Genel ölçü tablosu

Type	Total Stroke	power stroke	max.force	fast approach force	retracting force	A	A*	B	C	D	E	F	G	H	J	K	L	M	N	O
Tip	Toplam strok	Güç stroğu	max.kuvvet (daN)	Hızlı ilerleme stroğu (daN)	Ger dönüş kuvveti (daN)															
	mm	mm																		
06 S01	50	6	670	55	58	50		437	40	6XM 6X12	M12X1.5	16	30	12	24	10	G1/8"			14
06 S01	50	12	600	55	58	60		474	40	6XM 6X12	M12X1.5	16	30	12	24	10	G1/8"			14
06 S01	100	6	670	55	58	50		577	40	6XM 6X12	M12X1.5	16	30	12	24	10	G1/8"			14
06 S01	100	12	600	55	58	60		800	40	6XM 6X12	M12X1.5	16	30	12	24	10	G1/8"			14
06 S02	50	6	1050	83	97	60		498	40	6XM 6X12	M12X1.5	16	30	12	24	10	G1/8"			14
06 S02	50	12	1070	83	97	70		498	40	6XM 6X12	M12X1.5	16	30	12	24	10	G1/8"			14
06 S02	100	6	1050	83	97	60		644	40	6XM 6X12	M12X1.5	16	30	12	24	10	G1/8"			14
06 S02	100	12	1070	83	97	70		628	40	6XM 6X12	M12X1.5	16	30	12	24	10	G1/8"			14
06 S02	150	6	1050	83	97	60		790	40	6XM 6X12	M12X1.5	16	30	12	24	10	G1/8"			14
06 S02	150	12	1070	83	97	70		758	40	6XM 6X12	M12X1.5	16	30	12	24	10	G1/8"			14
06 S03	50	6	1810	144	154	70		488	54	6XM 8X12	M16X1.5	20	40	15	26	10	G1/4"			17
06 S03	50	12	1660	144	154	70	85	530	54	6XM 8X12	M16X1.5	20	40	15	26	10	G1/4"		205	17
06 S03	70	25	1660	144	154	70	85	663	54	6XM 8X12	M16X1.5	20	40	15	26	10	G1/4"		245	17
06 S03	100	6	1810	144	154	70		620	54	6XM 8X12	M16X1.5	20	40	15	26	10	G1/4"			17
06 S03	100	12	1660	144	154	70	85	652	54	6XM 8X12	M16X1.5	20	40	15	26	10	G1/4"		305	17
06 S03	100	25	1660	144	154	70	85	734	54	6XM 8X12	M16X1.5	20	40	15	26	10	G1/4"		305	17
06 S03	100	40	2000	144	154	70	110	760	54	6XM 8X12	M16X1.5	20	40	15	26	10	G1/4"		305	17
06 S03	150	6	1810	144	154	70		752	54	6XM 8X12	M16X1.5	20	40	15	26	10	G1/4"			17
06 S03	150	12	1660	144	154	70	85	774	54	6XM 8X12	M16X1.5	20	40	15	26	10	G1/4"		405	17
06 S03	150	25	1660	144	154	70	85	856	54	6XM 8X12	M16X1.5	20	40	15	26	10	G1/4"		405	17
06 S03	150	40	2000	144	154	70	110	872	54	6XM 8X12	M16X1.5	20	40	15	26	10	G1/4"		405	17
06 S03	150	50	2000	144	154	70	110	916	54	6XM 8X12	M16X1.5	20	40	15	26	10	G1/4"		405	1
06 S03	200	6	1810	144	154	70		884	54	6XM 8X12	M16X1.5	20	40	15	26	10	G1/4"			7
06 S03	200	12	1660	144	154	70	85	896	54	6XM 8X12	M16X1.5	20	40	15	26	10	G1/4"		505	17
06 S03	200	25	1660	144	154	70	85	979	54	6XM 8X12	M16X1.5	20	40	15	26	10	G1/4"		505	17
06 S03	200	40	2000	144	154	70	110	984	54	6XM 8X12	M16X1.5	20	40	15	26	10	G1/4"		505	17
06 S03	200	60	2000	144	154	70	110	1071	54	6XM 8X12	M16X1.5	20	40	15	26	10	G1/4"		505	17
06 S03	250	60	2000	144	154	70	110	1183	54	6XM 8X12	M16X1.5	20	40	15	26	10	G1/4"		605	17



The power is stated  $\pm$  5%

Güç değişimi  $\pm$  5%

DK OTOMASYON Ltd. Şti. Head office: Gazlıca cad. No:62/B 16220 Bursa •TURKEY

Tel: +90.224. 444 00 75

Fax: +90.224. 253 06 90



# dkPOWER type S 6 bar series, 0.6-100 tons

# dkPOWER tip S 6 bar serisi, 0.6-100 ton

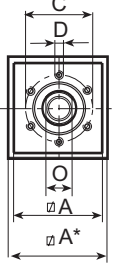
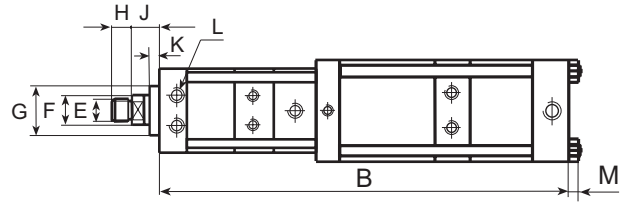
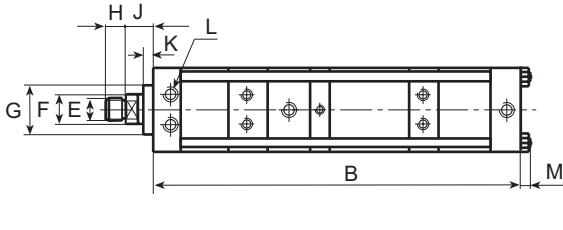


Table general dimensions  
Genel ölçü tablosu

Measurements in mm / Ölçüler mm dir

Type	Total Stroke	power stroke	max force	fast approach force	retracting force															
Tip	Toplam strok	Güç stroğu	max kuvvet	Hızlı ilerleme stroğu	Geri dönüş kuvveti	A	A"	B	C	D	E	F	G	H	J	K	L	M	N	O
	mm	mm	(daN)	(daN)	(daN)															
06 S04	50	6	3330	187	200	85		563	64	6XM 8X15	M22X2	30	50	20	28.5	10	G3/8"			24
06 S04	50	12	3330	187	200	85		641	64	6XM 8X15	M22X2	30	50	20	28.5	10	G3/8"			24
06 S04	70	25	4070	187	200	90	110	767	64	6XM 8X15	M22X2	30	50	20	28.5	10	G3/8"			251 24
06 S04	100	6	3330	187	200	85		709	64	6XM 8X15	M22X2	30	50	20	28.5	10	G3/8"			24
06 S04	100	12	3330	187	200	85		787	64	6XM 8X15	M22X2	30	50	20	28.5	10	G3/8"			24
06 S04	100	25	4070	187	200	90	110	843	64	6XM 8X15	M22X2	30	50	20	28.5	10	G3/8"			311 24
06 S04	150	6	3330	187	200	85		855	64	6XM 8X15	M22X2	30	50	20	28.5	10	G3/8"			24
06 S04	150	12	3330	187	200	85		933	64	6XM 8X15	M22X2	30	50	20	28.5	10	G3/8"			24
06 S04	150	25	4070	187	200	90	110	969	64	6XM 8X15	M22X2	30	50	20	28.5	10	G3/8"			411 24
06 S04	150	40	3600	187	200	90	135	926	64	6XM 8X15	M22X2	30	50	20	28.5	10	G3/8"	13		411 24
06 S04	200	6	3330	187	200	85		1001	64	6XM 8X15	M22X2	30	50	20	28.5	10	G3/8"			24
06 S04	200	12	3330	187	200	85		1079	64	6XM 8X15	M22X2	30	50	20	28.5	10	G3/8"			24
06 S04	200	25	4070	187	200	90	110	1095	64	6XM 8X15	M22X2	30	50	20	28.5	10	G3/8"			511 24
06 S04	200	40	3600	187	200	90	135	1042	64	6XM 8X15	M22X2	30	50	20	28.5	10	G3/8"	13		511 24
06 S04	200	50	3600	187	200	90	135	1093	64	6XM 8X15	M22X2	30	50	20	28.5	10	G3/8"	13		511 24
06 S04	250	12	3330	187	200	85		1225	64	6XM 8X15	M22X2	30	50	20	28.5	10	G3/8"			24
06 S04	250	25	4070	187	200	90	110	1221	64	6XM 8X15	M22X2	30	50	20	28.5	10	G3/8"			611 24
06 S04	250	40	3600	187	200	90	135	1158	64	6XM 8X15	M22X2	30	50	20	28.5	10	G3/8"	13		611 24
06 S04	300	60	3600	187	200	90	135	1377	64	6XM 8X15	M22X2	30	50	20	28.5	10	G3/8"	13		711 24
06 S04	400	60	3600	187	200	90	135	1611	64	6XM 8X15	M22X2	30	50	20	28.5	10	G3/8"	13		911 24
06 S05	50	6	7820	324	344	110		651	88	6XM 10X16	M30X2	45	70	25	35	10	G1/2"			36
06 S05	50	12	7820	324	344	110		755	88	6XM 10X16	M30X2	45	70	25	35	10	G1/2"			36
06 S05	50	20	6910	324	344	115	135	731	88	6XM 10X16	M30X2	45	70	25	35	10	G1/2"	13		241 36
06 S05	100	6	7820	324	344	110		801	88	6XM 10X16	M30X2	45	70	25	35	10	G1/2"			36
06 S05	100	12	7820	324	344	110		905	88	6XM 10X16	M30X2	45	70	25	35	10	G1/2"			36
06 S05	100	25	6910	324	344	115	135	912	88	6XM 10X16	M30X2	45	70	25	35	10	G1/2"	13		341 36
06 S05	100	40	7230	324	344	115	170	943	88	6XM 10X16	M30X2	45	70	25	35	10	G1/2"	17		341 36
06 S05	150	6	7820	324	344	110		951	88	6XM 10X16	M30X2	45	70	25	35	10	G1/2"			36
06 S05	150	12	7820	324	344	110		1055	88	6XM 10X16	M30X2	45	70	25	35	10	G1/2"			36
06 S05	150	25	6910	324	344	115	135	1044	88	6XM 10X16	M30X2	45	70	25	35	10	G1/2"	13		441 36
06 S05	150	40	7230	324	344	115	170	1063	88	6XM 10X16	M30X2	45	70	25	35	10	G1/2"	17		441 36
06 S05	200	6	7820	324	344	110		1101	88	6XM 10X16	M30X2	45	70	25	35	10	G1/2"			36
06 S05	200	12	7820	324	344	110		1205	88	6XM 10X16	M30X2	45	70	25	35	10	G1/2"			36
06 S05	200	25	6910	324	344	115	135	1176	88	6XM 10X16	M30X2	45	70	25	35	10	G1/2"	13		541 36
06 S05	200	40	7230	324	344	115	170	1183	88	6XM 10X16	M30X2	45	70	25	35	10	G1/2"	17		541 36
06 S05	200	60	7230	324	344	115	170	1308	88	6XM 10X16	M30X2	45	70	25	35	10	G1/2"	17		541 36
06 S05	250	12	7820	324	344	110		1355	88	6XM 10X16	M30X2	45	70	25	35	10	G1/2"			36
06 S05	250	25	6910	324	344	115	135	1308	88	6XM 10X16	M30X2	45	70	25	35	10	G1/2"	13		641 36
06 S05	250	40	7230	324	344	115	170	1303	88	6XM 10X16	M30X2	45	70	25	35	10	G1/2"	17		641 36
06 S05	300	60	7230	324	344	115	170	1548	88	6XM 10X16	M30X2	45	70	25	35	10	G1/2"	17		741 36
06 S05	400	60	7230	324	344	115	170	1788	88	6XM 10X16	M30X2	45	70	25	35	10	G1/2"	17		941 36

# dkPOWER type S 6 bar series, 0.6-100 tons

# dkPOWER tip S 6 bar serisi, 0.6-100 ton

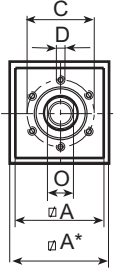
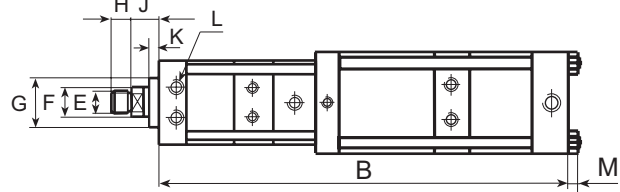
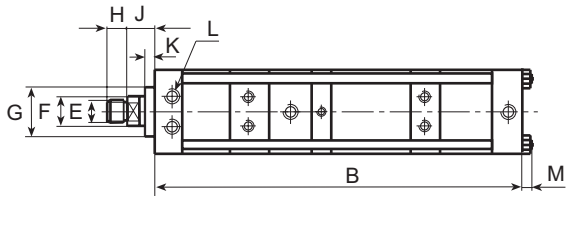


Table general dimensions  
Genel ölçü tablosu

Measurements in mm / Ölçüler mm dir

Type Tip	Total Stroke Toplam strok mm	power stroke Güç stroğu mm	max.force max.kuvvet (daN)	fast approach force Hızlı ilerleme stroğu (daN)	retracting force Geri dönüş kuvveti (daN)	A	A*	B	C	D	E	F	G	H	J	K	L	M	N	O
06 S06	50	6	13380	460	565	135		693	100	6XM 16X25	M30X2	50	75	25	36	15	G1/2"	17		41
06 S06	50	12	13380	460	565	135		807	100	6XM 16X25	M30X2	50	75	25	36	15	G1/2"	17		41
06 S06	100	6	13380	460	565	135		855	100	6XM 16X25	M30X2	50	75	25	36	15	G1/2"	17		41
06 S06	100	12	13380	460	565	135		970	100	6XM 16X25	M30X2	50	75	25	36	15	G1/2"	17		41
06 S06	100	25	14000	460	565	140	170	1054	100	6XM 16X25	M30X2	50	75	25	36	15	G1/2"	17	353	41
06 S06	150	6	13380	460	565	135		1018	100	6XM 16X25	M30X2	50	75	25	36	15	G1/2"	17		41
06 S06	150	12	13380	460	565	135		1133	100	6XM 16X25	M30X2	50	75	25	36	15	G1/2"	17		41
06 S06	150	25	14000	460	565	140	170	1194	100	6XM 16X25	M30X2	50	75	25	36	15	G1/2"	17	453	41
06 S06	150	40	13380	460	565	140	200	1269	100	6XM 16X25	M30X2	50	75	25	36	15	G1/2"	17	453	41
06 S06	200	6	13380	460	565	135		1181	100	6XM 16X25	M30X2	50	75	25	36	15	G1/2"	17		41
06 S06	200	12	13380	460	565	135		1269	100	6XM 16X25	M30X2	50	75	25	36	15	G1/2"	17		41
06 S06	200	25	14000	460	565	140	170	1334	100	6XM 16X25	M30X2	50	75	25	36	15	G1/2"	17	553	41
06 S06	200	40	13380	460	565	140	200	1399	100	6XM 16X25	M30X2	50	75	25	36	15	G1/2"	17	553	41
06 S06	250	12	13380	460	565	135		1459	100	6XM 16X25	M30X2	50	75	25	36	15	G1/2"	17		41
06 S06	250	25	14000	460	565	140	170	1474	100	6XM 16X25	M30X2	50	75	25	36	15	G1/2"	17	653	41
06 S06	250	40	13380	460	565	140	200	1529	100	6XM 16X25	M30X2	50	75	25	36	15	G1/2"	17	653	41
06 S06	300	40	13380	460	565	140	200	1659	100	6XM 16X25	M30X2	50	75	25	36	15	G1/2"	17	753	41
06 S07	50	6	28300	675	970	170		803	132	6XM 20X30	M39X2	56	100	35	47	18	G3/4"	23		50
06 S07	100	6	28300	675	970	170		981	132	6XM 20X30	M39X2	56	100	35	47	18	G3/4"	23		50
06 S07	100	12	28300	675	970	170		1131	132	6XM 20X30	M39X2	56	100	35	47	18	G3/4"	23		50
06 S07	100	20	30650	675	970	190	270	998	132	6XM 20X30	M39X2	56	100	35	47	18	G3/4"	17	361	50
06 S07	150	6	28300	675	970	170		1159	132	6XM 20X30	M39X2	56	100	35	47	18	G3/4"	23		50
06 S07	150	12	28300	675	97	170		1309	132	6XM 20X30	M39X2	56	100	35	47	18	G3/4"	23		50
06 S07	150	25	30650	675	09	190	270	1185	132	6XM 20X30	M39X2	56	100	35	47	18	G3/4"	17	461	50
06 S07	200	6	28300	675	70	170		1337	132	6XM 20X30	M39X2	56	100	35	47	18	G3/4"	23		50
06 S07	200	12	28300	675	970	170		1487	132	6XM 20X30	M39X2	56	100	35	47	18	G3/4"	23		50
06 S07	200	25	30650	675	970	190	270	1317	132	6XM 20X30	M39X2	56	100	35	47	18	G3/4"	17	561	50
06 S07	200	35	30650	675	970	190	270	1428	132	6XM 20X30	M39X2	56	100	35	47	18	G3/4"	17	561	50
06 S07	250	12	28300	675	970	170		1665	132	6XM 20X30	M39X2	56	100	35	47	18	G3/4"	23		50
06 S07	300	25	30650	675	970	190	270	1581	132	6XM 20X30	M39X2	56	100	35	47	18	G3/4"	17	761	50
06 S07	300	40	30650	675	970	190	270	1748	132	6XM 20X30	M39X2	56	100	35	47	18	G3/4"	17	761	50
06 S07	400	40	30650	675	970	190	270	2012	132	6XM 20X30	M39X2	56	100	35	47	18	G3/4"	17	961	50



The power is stated  $\pm 5\%$

Güç değişimi  $\pm 5\%$

DK OTOMASYON İtD. Şti. Head office: Gazcılar cad. No:62/B 16220 Bursa •TURKEY Tel: +90.224. 444 00 75 Fax: +90.224. 253 06 90

# dkPOWER type S 6 bar series, 0.6-100 tons

# dkPOWER tip S 6 bar serisi, 0.6-100 ton

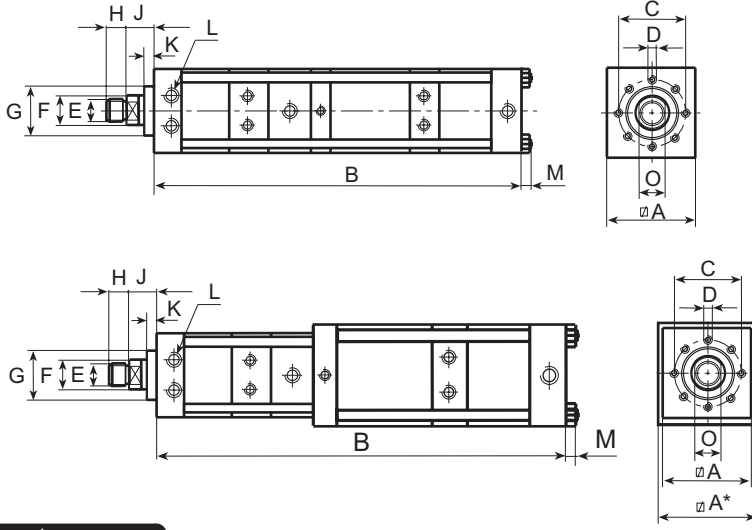


Table general dimensions  
Genel ölçü tablosu

Measurements in mm / Ölçüler mm dir

Type	Total Stroke	power stroke	max.force	fast approach force	retracting force															
Tip	Toplam strok	Güç stroğu	max.kuvvet	Hızlı ilerleme stroğu	Geri dönüş kuvveti	A	A*	B	C	D	E	F	G	H	J	K	L	M	N	O
	mm	mm	(daN)	(daN)	(daN)															
06 S08	70	6	45900	725	1225	200		957	150	8XM 20X30	M42X2	63	115	40	52	25	G3/4"	31		55
06 S08	100	6	45900	725	1225	200		1075	150	8XM 20X30	M42X2	63	115	40	52	25	G3/4"	31		55
06 S08	100	12	47600	725	1225	220	270	1026	150	8XM 20X30	M42X2	63	115	40	52	25	G3/4"	17	367	55
06 S08	150	6	45900	725	1225	200		1271	150	8XM 20X30	M42X2	63	115	40	52	25	G3/4"	31		55
06 S08	200	10	45900	725	1225	200		1597	150	8XM 20X30	M42X2	63	115	40	52	25	G3/4"	31		55
06 S08	200	20	47600	725	1225	220	270	1465	150	8XM 20X30	M42X2	63	115	40	52	25	G3/4"	17	567	55
06 S08	250	10	45900	725	1225	200		1793	150	8XM 20X30	M42X2	63	115	40	52	25	G3/4"	31		55
06 S08	300	20	47600	725	1225	220	270	1765	150	8XM 20X30	M42X2	63	115	40	52	25	G3/4"	17	767	55
06 S08	300	30	47600	725	1225	220	325	1693	150	8XM 20X30	M42X2	63	115	40	52	25	G3/4"	21	767	55
06 S08	400	40	47600	725	1225	220	325	2084	150	8XM 20X30	M42X2	63	115	40	52	25	G3/4"	21	967	55

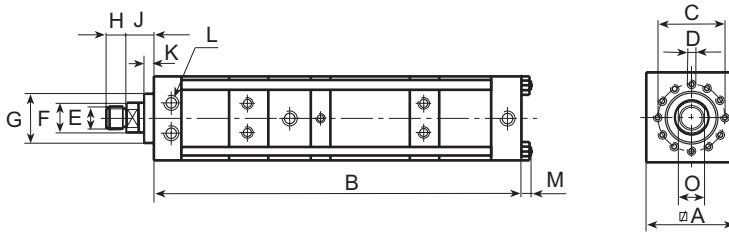


Table general dimensions  
Genel ölçü tablosu

Measurements in mm / Ölçüler mm dir

Type	Total Stroke	power stroke	max.force	fast approach force	retracting force															
Tip	Toplam strok	Güç stroğu	max.kuvvet	Hızlı ilerleme stroğu	Geri dönüş kuvveti	A	A*	B	C	D	E	F	G	H	J	K	L	M	N	O
	mm	mm	(daN)	(daN)	(daN)															
06 S09	100	10	72700	1300	2250	325		1329	200	12XM 24X40	M64X2	100	150	60	60	25	G 1"	31		85
06 S09	150	10	72700	1300	2250	325		1533	200	12XM 24X40	M64X2	100	150	60	60	25	G 1"	31		85
06 S09	200	13	72700	1300	2250	325		1809	200	12XM 24X40	M64X2	100	150	60	60	25	G 1"	31		85
06 S09	250	12	72700	1300	2250	325		2013	200	12XM 24X40	M64X2	100	150	60	60	25	G 1"	31		85
06 S09	300	16	72700	1300	2250	325		2288	200	12XM 24X40	M64X2	100	150	60	60	25	G 1"	31		85
06 S10	100	8	98500	1300	2250	325		1329	200	12XM 24X40	M64X2	100	150	60	60	25	G 1"	31		85
06 S10	150	8	98500	1300	2250	325		1533	200	12XM 24X40	M64X2	100	150	60	60	25	G 1"	31		85
06 S10	200	10	98500	1300	2250	325		1809	200	12XM 24X40	M64X2	100	150	60	60	25	G 1"	31		85
06 S10	250	10	98500	1300	2250	325		2013	200	12XM 24X40	M64X2	100	150	60	60	25	G 1"	31		85
06 S10	300	12	98500	1300	2250	325		2288	200	12XM 24X40	M64X2	100	150	60	60	25	G 1"	31		85



The power is stated  $\pm$  5%

Güç değişimi  $\pm$  5%

DK OTOMASYON Ltd. Şti. Head office: Gazlıca cad. No:62/B 16220 Bursa •TURKEY Tel: +90.224. 444 00 75 Fax: +90.224. 253 06 90

# dkPOWER type SK 6 bar series, 0.6-50 tons

# dkPOWER tip SK 6 bar serisi, 0.6-100 ton

## type SK

Total strokes  
Power strokes  
Force  
Operating pressure  
Special execution

## tip SK

Toplam strok : 50-400mm  
Güç stroğu : 5-40mm  
Kuvvet : 0.5-50 ton  
Operasyon basıncı : 2- 6 bar  
Özel uygulama basıncı : Full forced reached with 6 bar operating pressure  
Max güce 6 bar'lık hava basıncında ulaşır

Power stroke limitation (optional) : Possible  
Güç stroğu kısıtlaması (opsiyonel) : Mümkün

### Sample order / Sipariş örneği

06 SK01 - 100 - 10

Power stroke  
Total stroke  
Type  
Max.working pressure  
Güç stroğu  
Toplam strok  
Tip  
Max.çalışma basıncı

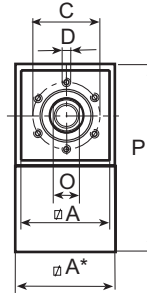
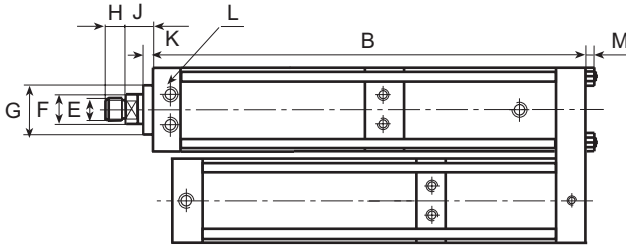


Table general dimensions  
Genel ölçü tablosu

Measurements in mm / Ölçüler mm dir

Type Tip	Total Stroke Toplam strok	power stroke Güç stroğu	max.force max.kuvvet	fast approach force Hızlı ilerleme stroğu (daN)	retracting force Geri dönüş kuvveti (daN)	A	A"	B	C	D	E	F	G	H	J	K	L	M	P	O	R
06 SK01	100	5	670	55	58	50		331	40	6XM 6X12	M12X1.5	16	30	12	24	10	G1/8"	105	14		
06 SK01	100	10	670	55	58	50		353	40	6XM 6X12	M12X1.5	16	30	12	24	10	G1/8"	105	14		
06 SK01	100	15	600	55	58	50	60	335	40	6XM 6X12	M12X1.5	16	30	12	24	10	G1/8"	115	14		
06 SK01	150	10	670	55	58	50		421	40	6XM 6X12	M12X1.5	16	30	12	24	10	G1/8"	105	14		
06 SK01	150	15	600	55	58	50	60	421	40	6XM 6X12	M12X1.5	16	30	12	24	10	G1/8"	115	14		
06 SK02	100	5	1050	83	97	60		389	40	6XM 6X12	M12X1.5	16	30	12	24	10	G1/8"	125	14		
06 SK02	100	10	1050	83	97	60		372	40	6XM 6X12	M12X1.5	16	30	12	24	10	G1/8"	125	14		
06 SK02	100	15	1070	83	97	60	70	388	40	6XM 6X12	M12X1.5	16	30	12	24	10	G1/8"	134	14		
06 SK02	150	10	1050	83	97	60		442	40	6XM 6X12	M12X1.5	16	30	12	24	10	G1/8"	125	14		
06 SK02	150	15	1070	83	97	60	70	442	40	6XM 6X12	M12X1.5	16	30	12	24	10	G1/8"	134	14		
06 SK03	100	4	1810	144	154	70		349	54	6XM 8X12	M16X1.5	20	40	15	26	10	G1/4"	145	17		
06 SK03	100	10	1660	144	154	70	85	402	54	6XM 8X12	M16X1.5	20	40	15	26	10	G1/4"	160	17		
06 SK03	100	15	2000	144	154	70	110	414	54	6XM 8X12	M16X1.5	20	40	15	26	10	G1/4"	185	17		
06 SK03	150	10	1660	144	154	70	85	449	54	6XM 8X12	M16X1.5	20	40	15	26	10	G1/4"	160	17		
06 SK03	150	15	2000	144	154	70	110	449	54	6XM 8X12	M16X1.5	20	40	15	26	10	G1/4"	185	17		
06 SK03	200	10	1660	144	154	70	85	549	54	6XM 8X12	M16X1.5	20	40	15	26	10	G1/4"	160	17		
06 SK03	200	15	2000	144	154	70	110	549	54	6XM 8X12	M16X1.5	20	40	15	26	10	G1/4"	185	17		
06 SK04	100	5	3330	187	200	85		454	64	6XM 8X15	M22X2	30	50	20	28.5	10	G3/8"	175	24		
06 SK04	100	10	4070	187	200	85	110	488	64	6XM 8X15	M22X2	30	50	20	28.5	10	G3/8"	200	24		
06 SK04	100	20	3600	187	200	85	135	450	64	6XM 8X15	M22X2	30	50	20	28.5	10	G3/8"	13	225	2	51
06 SK04	150	5	3330	187	200	85		500	64	6XM 8X15	M22X2	30	50	20	28.5	10	G3/8"	175	4		
06 SK04	150	10	4070	187	200	85	110	514	64	6XM 8X15	M22X2	30	50	20	28.5	10	G3/8"	200	24		
06 SK04	150	20	3600	187	200	85	135	470	64	6XM 8X15	M22X2	30	50	20	28.5	10	G3/8"	13	225	24	51
06 SK04	200	5	3330	187	200	85		560	64	6XM 8X15	M22X2	30	50	20	28.5	10	G3/8"	175	24		
06 SK04	200	10	4070	187	200	85	110	560	64	6XM 8X15	M22X2	30	50	20	28.5	10	G3/8"	200	24		
06 SK04	200	20	3600	187	200	85	135	560	64	6XM 8X15	M22X2	30	50	20	28.5	10	G3/8"	13	225	24	51

The power is stated  $\pm 5\%$

Güç değişimi  $\pm 5\%$



DK OTOMASYON Ltd. Şti. Head office: Gazlılar cad. No:62/B 16220 Bursa •TURKEY Tel: +90.224. 444 00 75 Fax: +90.224. 253 06 90

# dkPOWER type SK 6 bar series, 0.6-50 tons

# dkPOWER tip SK 6 bar serisi, 0.6-100 ton

Table general dimensions  
Genel ölçü tablosu

Measurements in mm / Ölçüler mm dir

Type Tip	Total Stroke Toplam strok mm	power stroke Güç stroğu mm	max.force max.kuvvet (daN)	fast approach force Hızlı ilerleme stroğu (daN)	retracting force Geri dönüş kuvveti (daN)	A	A"	B	C	D	E	F	G	H	J	K	L	M	P	O	R
06 SK05	100	5	7820	324	344	110		531	88	6XM 10X16	M30X2	45	70	25	35	10	G1/2"		225	36	
06 SK05	100	10	6910	324	344	110	135	526	88	6XM 10X16	M30X2	45	70	25	35	10	G1/2"	13	250	36	
06 SK05	100	20	7230	324	344	110	170	540	88	6XM 10X16	M30X2	45	70	25	35	10	G1/2"	17	285	36	63
06 SK05	150	5	7820	324	344	110		581	88	6XM 10X16	M30X2	45	70	25	35	10	G1/2"		225	36	
06 SK05	150	10	6910	324	344	110	135	558	88	6XM 10X16	M30X2	45	70	25	35	10	G1/2"	13	250	36	
06 SK05	150	20	7230	324	344	110	170	560	88	6XM 10X16	M30X2	45	70	25	35	10	G1/2"	17	285	36	63
06 SK05	200	5	7820	324	344	110		631	88	6XM 10X16	M30X2	45	70	25	35	10	G1/2"		225	36	
06 SK05	200	10	6910	324	344	110	135	599	88	6XM 10X16	M30X2	45	70	25	35	10	G1/2"	13	250	36	
06 SK05	200	20	7230	324	344	110	170	599	88	6XM 10X16	M30X2	45	70	25	35	10	G1/2"	17	285	36	63
06 SK05	250	10	6910	324	344	110	135	699	88	6XM 10X16	M30X2	45	70	25	35	10	G1/2"	13	250	36	
06 SK05	250	20	7230	324	344	110	170	699	88	6XM 10X16	M30X2	45	70	25	35	10	G1/2"	17	285	36	63
06 SK06	100	5	13380	460	565	135		585	100	6XM 16X25	M30X2	50	75	25	36	15	G1/2"		275	41	
06 SK06	100	10	14000	460	565	135	170	591	100	6XM 16X25	M30X2	50	75	25	36	15	G1/2"	17	310	41	53
06 SK06	100	20	13380	460	565	135	200	558	100	6XM 16X25	M30X2	50	75	25	36	15	G1/2"	17	336	41	
06 SK06	150	5	13380	460	565	135		648	100	6XM 16X25	M30X2	50	75	25	36	15	G1/2"		275	41	
06 SK06	150	10	14000	460	565	135	170	631	100	6XM 16X25	M30X2	50	75	25	36	15	G1/2"	17	310	41	53
06 SK06	150	20	13380	460	565	135	200	572	100	6XM 16X25	M30X2	50	75	25	36	15	G1/2"	17	336	41	
06 SK06	200	5	13380	460	565	135		711	100	6XM 16X25	M30X2	50	75	25	36	15	G1/2"		275	41	
06 SK06	200	10	14000	460	565	135	170	671	100	6XM 16X25	M30X2	50	75	25	36	15	G1/2"	17	310	41	53
06 SK06	200	20	13380	460	565	135	200	621	100	6XM 16X25	M30X2	50	75	25	36	15	G1/2"	17	336	41	
06 SK06	250	5	13380	460	565	135		774	100	6XM 16X25	M30X2	50	75	25	36	15	G1/2"		275	41	
06 SK06	250	10	14000	460	565	135	170	721	100	6XM 16X25	M30X2	50	75	25	36	15	G1/2"	17	310	41	53
06 SK06	250	20	13380	460	565	135	200	721	100	6XM 16X25	M30X2	50	75	25	36	15	G1/2"	17	336	41	
06 SK07	100	10	30650	675	970	170	270	609	132	6XM 20X30	M39X2	56	100	35	47	18	G3/4"	17	446	50	42
06 SK07	150	10	30650	675	970	170	270	641	132	6XM 20X30	M39X2	56	100	35	47	18	G3/4"	17	446	50	42
06 SK07	150	20	30650	675	970	170	270	752	132	6XM 20X30	M39X2	56	100	35	47	18	G3/4"	17	446	50	152
06 SK07	200	10	30650	675	970	170	270	673	132	6XM 20X30	M39X2	56	100	35	47	18	G3/4"	17	446	50	42
06 SK07	200	20	30650	675	970	170	270	784	132	6XM 20X30	M39X2	56	100	35	47	18	G3/4"	17	446	50	152
06 SK07	300	20	30650	675	970	170	270	849	132	6XM 20X30	M39X2	56	100	35	47	18	G3/4"	17	446	50	152
06 SK07	400	20	30650	675	970	170	270	1039	132	6XM 20X30	M39X2	56	100	35	47	18	G3/4"	17	446	50	42

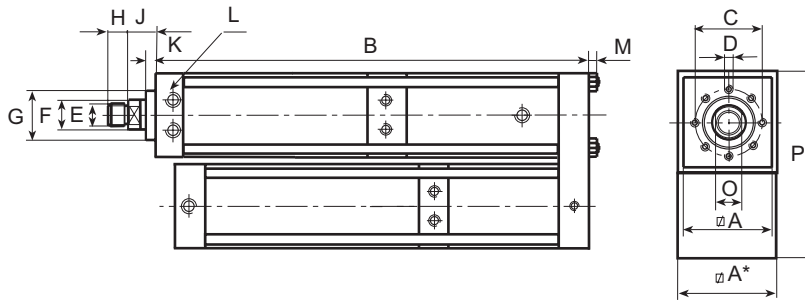


Table general dimensions  
Genel ölçü tablosu

Measurements in mm / Ölçüler mm dir

Type Tip	Total Stroke Toplam strok mm	power stroke Güç stroğu mm	max.force max.kuvvet (daN)	fast approach force Hızlı ilerleme stroğu (daN)	retracting force Geri dönüş kuvveti (daN)	A	A"	B	C	D	E	F	G	H	J	K	L	M	P	O	R
06 SK08	100	10	47600	725	1225	200	270	727	150	8XM 20X30	M42X2	63	115	40	52	25	G3/4"	23	476	55	85
06 SK08	100	20	47600	725	1225	200	325	769	150	8XM 20X30	M42X2	63	115	40	52	25	G3/4"	23	534	55	154
06 SK08	200	10	47600	725	1225	200	270	827	150	8XM 20X30	M42X2	63	115	40	52	25	G3/4"	23	476	55	85
06 SK08	200	20	47600	725	1225	200	325	839	150	8XM 20X30	M42X2	63	115	40	52	25	G3/4"	23	534	55	154
06 SK08	300	10	47600	725	1225	200	270	927	150	8XM 20X30	M42X2	63	115	40	52	25	G3/4"	23	476	55	85
06 SK08	300	20	47600	725	1225	200	325	909	150	8XM 20X30	M42X2	63	115	40	52	25	G3/4"	23	534	55	154



# dkPOWER type S 10 bar series, 0.7-100 tons

# dkPOWER tip S 10 bar serisi, 0.7-100 ton

## type S

Total strokes	Toplam strok	: 50-400mm
Power strokes	Güç stroğu	: 5-40mm
Force	Kuvvet	: 0.7-100 ton
Operating pressure	Operasyon basıncı	: 2-10 bar
Special execution	Özel uygulama basıncı	: Full forced reached with 10 bar operating pressure Max güce 10 bar'lık hava basıncında ulaşır

Power stroke limitation (optional) Güç stroğu kısıtlaması (opsiyonel) : Possible Mümkün

### Sample order / Sipariş örneği

10 S01 - 100 - 10

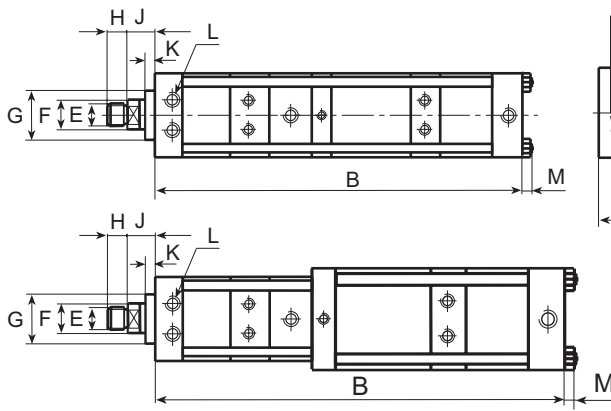
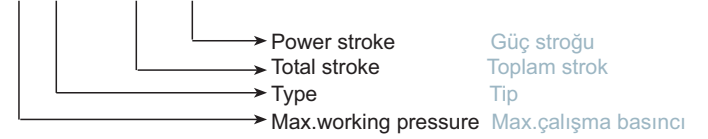


Table general dimensions  
Genel ölçü tablosu

Measurements in mm / Ölçüler mm dir

Type	Total Stroke	power stroke	max.force	fast approach force	retracting force	A	A"	B	C	D	E	F	G	H	J	K	L	M	N	O
Tip	Toplam strok	Güç stroğu	max.kuvvet	Hızlı ilerleme stroğu	Geri dönüş kuvveti															
	mm	mm	(daN)	(daN)	(daN)															
10 S01	50	6	700	95	100	50		413	40	6XM 6X12	M12X1.5	16	30	12	24	10	G1/8"			14
10 S01	50	12	1050	95	100	60		453	40	6XM 6X12	M12X1.5	16	30	12	24	10	G1/8"			14
10 S01	100	6	700	95	100	50		553	40	6XM 6X12	M12X1.5	16	30	12	24	10	G1/8"			14
10 S01	100	12	1050	95	100	60		579	40	6XM 6X12	M12X1.5	16	30	12	24	10	G1/8"			14
10 S02	50	6	1210	144	166	60		480	40	6XM 6X12	M12X1.5	16	30	12	24	10	G1/8"			14
10 S02	50	12	1325	144	166	70		477	40	6XM 6X12	M12X1.5	16	30	12	24	10	G1/8"			14
10 S02	100	6	1210	144	166	60		626	40	6XM 6X12	M12X1.5	16	30	12	24	10	G1/8"			14
10 S02	100	12	1325	144	166	70		607	40	6XM 6X12	M12X1.5	16	30	12	24	10	G1/8"			14
10 S02	150	6	1210	144	166	60		772	40	6XM 6X12	M12X1.5	16	30	12	24	10	G1/8"			14
10 S02	150	12	1325	144	166	70		737	40	6XM 6X12	M12X1.5	16	30	12	24	10	G1/8"			14
10 S03	50	6	2100	250	265	70		468	54	6XM 8X12	M16X1.5	20	40	15	26	10	G1/4"			17
10 S03	50	12	2100	250	265	70		505	54	6XM 8X12	M16X1.5	20	40	15	26	10	G1/4"			17
10 S03	50	25	2070	250	265	70	85	564	54	6XM 8X12	M16X1.5	20	40	15	26	10	G1/4"		205	17
10 S03	100	6	2100	250	265	70		600	54	6XM 8X12	M16X1.5	20	40	15	26	10	G1/4"			17
10 S03	100	12	2100	250	265	70		637	54	6XM 8X12	M16X1.5	20	40	15	26	10	G1/4"			17
10 S03	100	25	2070	250	265	70	85	686	54	6XM 8X12	M16X1.5	20	40	15	26	10	G1/4"		305	17
10 S03	100	40	2070	250	265	70	85	751	54	6XM 8X12	M16X1.5	20	40	15	26	10	G1/4"		305	17
10 S03	100	60	2070	250	265	70	110	733	54	6XM 8X12	M16X1.5	20	40	15	26	10	G1/4"		305	17
10 S03	150	6	2100	250	265	70		732	54	6XM 8X12	M16X1.5	20	40	15	26	10	G1/4"			17
10 S03	150	12	2100	250	265	70		769	54	6XM 8X12	M16X1.5	20	40	15	26	10	G1/4"			17
10 S03	150	25	2070	250	265	70	85	808	54	6XM 8X12	M16X1.5	20	40	15	26	10	G1/4"		405	17
10 S03	150	40	2070	250	265	70	85	873	54	6XM 8X12	M16X1.5	20	40	15	26	10	G1/4"		405	1
10 S03	150	60	2070	250	265	70	110	845	54	6XM 8X12	M16X1.5	20	40	15	26	10	G1/4"		405	7
10 S03	150	80	2070	250	265	70	110	894	54	6XM 8X12	M16X1.5	20	40	15	26	10	G1/4"		405	17



# dkPOWER type S 10 bar series, 0.7-100 tons

# dkPOWER tip S 10 bar serisi, 0.7-100 ton

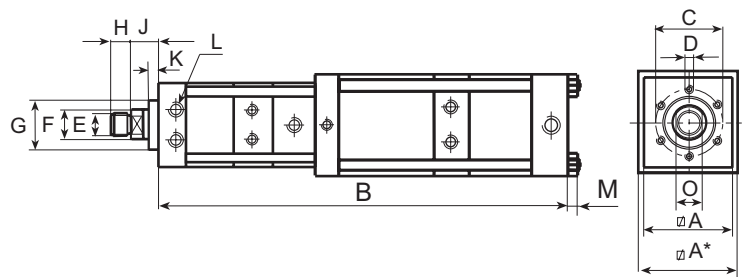
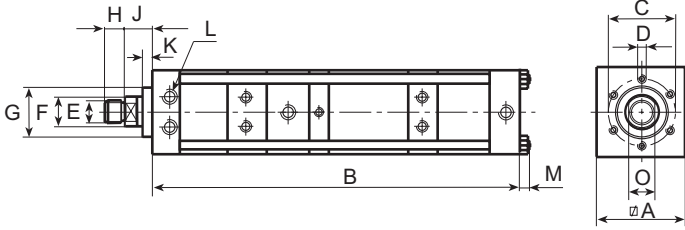


Table general dimensions  
Genel ölçü tablosu

Measurements in mm / Ölçüler mm dir

Type	Total Stroke	power stroke	max.force	fast approach force	retracting force	A	A"	B	C	D	E	F	G	H	J	K	L	M	N	O
Tip	Toplam strok	Güç stroğu	max.kuvvet	Hızlı ilerleme stroğu	Gen dönüş kuvveti															
	mm	mm	(daN)	(daN)	(daN)															
10 S03	200	6	2100	250	265	70		864	54	6XM 8X12	M16X1.5	20	40	15	26	10	G1/4"			17
10 S03	200	12	2100	250	265	70		901	54	6XM 8X12	M16X1.5	20	40	15	26	10	G1/4"			17
10 S03	200	25	2070	250	265	70	85	930	54	6XM 8X12	M16X1.5	20	40	15	26	10	G1/4"			505 17
10 S03	200	40	2070	250	265	70	85	995	54	6XM 8X12	M16X1.5	20	40	15	26	10	G1/4"			505 17
10 S03	200	60	2070	250	265	70	110	957	54	6XM 8X12	M16X1.5	20	40	15	26	10	G1/4"			505 17
10 S03	200	80	2070	250	265	70	110	1006	54	6XM 8X12	M16X1.5	20	40	15	26	10	G1/4"			505 17
10 S03	250	40	2070	250	265	70	85	1119	54	6XM 8X12	M16X1.5	20	40	15	26	10	G1/4"			605 17
10 S03	250	80	2070	250	265	70	110	1118	54	6XM 8X12	M16X1.5	20	40	15	26	10	G1/4"			605 17
10 S04	50	6	4100	320	340	85		539	64	6XM 8X15	M22X2	30	50	20	28.5	10	G3/8"			24
10 S04	50	12	4100	320	340	85		593	64	6XM 8X15	M22X2	30	50	20	28.5	10	G3/8"			24
10 S04	70	25	4100	320	340	90	110	669	64	6XM 8X15	M22X2	30	50	20	28.5	10	G3/8"			251 24
10 S04	100	6	4100	320	340	85		685	64	6XM 8X15	M22X2	30	50	20	28.5	10	G3/8"			24
10 S04	100	12	4100	320	340	85		739	64	6XM 8X15	M22X2	30	50	20	28.5	10	G3/8"			24
10 S04	100	25	4100	320	340	90	110	745	64	6XM 8X15	M22X2	30	50	20	28.5	10	G3/8"			311 24
10 S04	100	40	4100	320	340	90	135	736	64	6XM 8X15	M22X2	30	50	20	28.5	10	G3/8"	13		311 24
10 S04	150	6	4100	320	340	85		831	64	6XM 8X15	M22X2	30	50	20	28.5	10	G3/8"			24
10 S04	150	12	4100	320	340	85		885	64	6XM 8X15	M22X2	30	50	20	28.5	10	G3/8"			24
10 S04	150	25	4100	320	340	90	110	871	64	6XM 8X15	M22X2	30	50	20	28.5	10	G3/8"			411 24
10 S04	150	40	4100	320	340	90	135	853	64	6XM 8X15	M22X2	30	50	20	28.5	10	G3/8"	13		411 24
10 S04	200	6	4100	320	340	85		977	64	6XM 8X15	M22X2	30	50	20	28.5	10	G3/8"			24
10 S04	200	12	4100	320	340	85		1031	64	6XM 8X15	M22X2	30	50	20	28.5	10	G3/8"			24
10 S04	200	25	4100	320	340	90	110	997	64	6XM 8X15	M22X2	30	50	20	28.5	10	G3/8"			511 24
10 S04	200	40	4100	320	340	90	135	969	64	6XM 8X15	M22X2	30	50	20	28.5	10	G3/8"	13		511 24
10 S04	200	50	4100	320	340	90	135	1034	64	6XM 8X15	M22X2	30	50	20	28.5	10	G3/8"	13		511 24
10 S04	250	12	4100	320	340	85		1177	64	6XM 8X15	M22X2	30	50	20	28.5	10	G3/8"			24
10 S04	250	25	4100	320	340	90	110	1123	64	6XM 8X15	M22X2	30	50	20	28.5	10	G3/8"			611 24
10 S04	300	60	4100	320	340	90	135	1268	64	6XM 8X15	M22X2	30	50	20	28.5	10	G3/8"	13		711 24
10 S04	400	60	4100	320	340	90	135	1502	64	6XM 8X15	M22X2	30	50	20	28.5	10	G3/8"	13		911 24
10 S05	50	6	7840	560	595	110		605	88	6XM 10X16	M30X2	45	70	25	35	10	G1/2"			36
10 S05	50	12	7840	560	595	110		664	88	6XM 10X16	M30X2	45	70	25	35	10	G1/2"			36
10 S05	50	25	7840	560	595	115	135	692	88	6XM 10X16	M30X2	45	70	25	35	10	G1/2"	13		241 36
10 S05	100	6	7840	560	595	110		755	88	6XM 10X16	M30X2	45	70	25	35	10	G1/2"			36
10 S05	100	12	7840	560	595	110		814	88	6XM 10X16	M30X2	45	70	25	35	10	G1/2"			36
10 S05	100	25	7840	560	595	115	135	824	88	6XM 10X16	M30X2	45	70	25	35	10	G1/2"	13		341 36
10 S05	100	40	8200	560	595	115	170	855	88	6XM 10X16	M30X2	45	70	25	35	10	G1/2"	17		341 36
10 S05	150	6	7840	560	595	110		905	88	6XM 10X16	M30X2	45	70	25	35	10	G1/2"			36
10 S05	150	12	7840	560	595	110		964	88	6XM 10X16	M30X2	45	70	25	35	10	G1/2"			36
10 S05	150	25	7840	560	595	115	135	956	88	6XM 10X16	M30X2	45	70	25	35	10	G1/2"	13		441 36
10 S05	150	40	8200	560	595	115	170	975	88	6XM 10X16	M30X2	45	70	25	35	10	G1/2"	17		441 36
10 S05	200	6	7840	560	595	110		1055	88	6XM 10X16	M30X2	45	70	25	35	10	G1/2"			36



The power is stated  $\pm 5\%$  Güç değişimi  $\pm 5\%$

DK OTOMASYON İtđ. Şti. Head office: Gazcılar cad. No:62/B 16220 Bursa •TURKEY Tel: +90.224. 444 00 75 Fax: +90.224. 253 06 90

# dkPOWER type S 10 bar series, 0.7-100 tons

# dkPOWER tip S 10 bar serisi, 0.7-100 ton

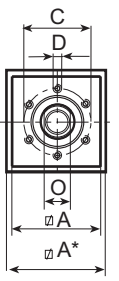
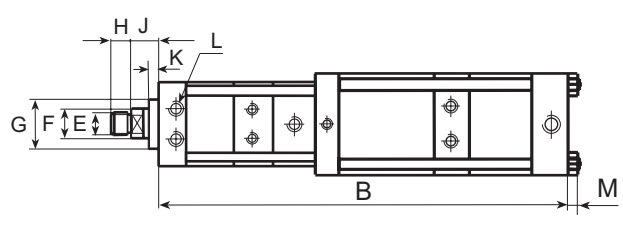
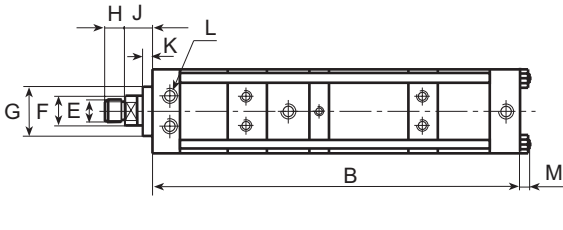


Table general dimensions  
Genel ölçü tablosu

Measurements in mm / Ölçüler mm dir

Type	Total Stroke	power stroke	max.force	fast approach force	retracting force															
Tip	Toplam strok	Güç stroğu	max.kuvvet	Hızlı ilerleme stroğu	Geri dönüş kuvveti	A	A*	B	C	D	E	F	G	H	J	K	L	M	N	O
	mm	mm	(daN)	(daN)	(daN)															
10 S05	200	12	7840	560	595	110		1114	88	6XM 10X16	M30X2	45	70	25	35	10	G1/2"			36
10 S05	200	25	7840	560	595	115	135	1088	88	6XM 10X16	M30X2	45	70	25	35	10	G1/2"	13	541	36
10 S05	200	40	8200	560	595	115	170	1095	88	6XM 10X16	M30X2	45	70	25	35	10	G1/2"	17	541	36
10 S05	200	60	8200	560	595	115	170	1175	88	6XM 10X16	M30X2	45	70	25	35	10	G1/2"	17	541	36
10 S05	250	12	7840	560	595	110		1264	88	6XM 10X16	M30X2	45	70	25	35	10	G1/2"			36
10 S05	250	25	7840	560	595	115	135	1220	88	6XM 10X16	M30X2	45	70	25	35	10	G1/2"	13	641	36
10 S05	250	40	8200	560	595	115	170	1215	88	6XM 10X16	M30X2	45	70	25	35	10	G1/2"	17	641	36
10 S05	300	60	8200	560	595	115	170	1415	88	6XM 10X16	M30X2	45	70	25	35	10	G1/2"	17	741	36
10 S05	400	60	8200	560	595	115	170	1655	88	6XM 10X16	M30X2	45	70	25	35	10	G1/2"	17	941	36
10 S06	50	6	15000	800	975	135		652	100	6XM 16X25	M30X2	50	75	25	36	15	G1/2"	17		41
10 S06	50	12	15000	800	975	135		724	100	6XM 16X25	M30X2	50	75	25	36	15	G1/2"	17		41
10 S06	100	6	15000	800	975	135		814	100	6XM 16X25	M30X2	50	75	25	36	15	G1/2"	17		41
10 S06	100	12	15000	800	975	135		887	100	6XM 16X25	M30X2	50	75	25	36	15	G1/2"	17		41
10 S06	100	25	15750	800	975	140	170	943	100	6XM 16X25	M30X2	50	75	25	36	15	G1/2"	17	353	41
10 S06	150	6	15000	800	975	135		977	100	6XM 16X25	M30X2	50	75	25	36	15	G1/2"	17		41
10 S06	150	12	15000	800	975	135		1050	100	6XM 16X25	M30X2	50	75	25	36	15	G1/2"	17		41
10 S06	150	25	15750	800	975	140	170	1081	100	6XM 16X25	M30X2	50	75	25	36	15	G1/2"	17	453	41
10 S06	150	40	15000	800	975	140	200	1116	100	6XM 16X25	M30X2	50	75	25	36	15	G1/2"	17	453	41
10 S06	200	6	15000	800	975	135		1140	100	6XM 16X25	M30X2	50	75	25	36	15	G1/2"	17		41
10 S06	200	12	15000	800	975	135		1213	100	6XM 16X25	M30X2	50	75	25	36	15	G1/2"	17		41
10 S06	200	25	15750	800	975	140	170	1219	100	6XM 16X25	M30X2	50	75	25	36	15	G1/2"	17	553	41
10 S06	200	40	15000	800	975	140	200	1246	100	6XM 16X25	M30X2	50	75	25	36	15	G1/2"	17	553	41
10 S06	250	12	15000	800	975	135		1376	100	6XM 16X25	M30X2	50	75	25	36	15	G1/2"	17		41
10 S06	250	25	15750	800	975	140	170	1357	100	6XM 16X25	M30X2	50	75	25	36	15	G1/2"	17	653	41
10 S06	250	40	15000	800	975	140	200	1376	100	6XM 16X25	M30X2	50	75	25	36	15	G1/2"	17	653	41
10 S06	300	25	15750	800	975	140	170	1495	100	6XM 16X25	M30X2	50	75	25	36	15	G1/2"	17	753	41
10 S06	300	40	15000	800	975	140	200	1506	100	6XM 16X25	M30X2	50	75	25	36	15	G1/2"	17	753	41
10 S07	50	6	31700	1150	1675	170		751	132	6XM 20X30	M39X2	56	100	35	47	18	G3/4"	23		50
10 S07	70	12	31700	1150	1675	170		919	132	6XM 20X30	M39X2	56	100	35	47	18	G3/4"	23		50
10 S07	100	6	31700	1150	1675	170		929	132	6XM 20X30	M39X2	56	100	35	47	18	G3/4"	23		50
10 S07	100	12	31700	1150	1675	170		1025	132	6XM 20X30	M39X2	56	100	35	47	18	G3/4"	23		50
10 S07	100	25	30250	1150	1675	190	270	936	132	6XM 20X30	M39X2	56	100	35	47	18	G3/4"	17	361	50
10 S07	150	6	31700	1150	1675	170		1107	132	6XM 20X30	M39X2	56	100	35	47	18	G3/4"	23		50
10 S07	150	12	31700	1150	1675	170		1203	132	6XM 20X30	M39X2	56	100	35	47	18	G3/4"	23		50
10 S07	150	25	30250	1150	1675	190	270	1068	132	6XM 20X30	M39X2	56	100	35	47	18	G3/4"	17	461	50
10 S07	200	6	31700	1150	1675	170		1285	132	6XM 20X30	M39X2	56	100	35	47	18	G3/4"	23		50
10 S07	200	12	31700	1150	1675	170		1381	132	6XM 20X30	M39X2	56	100	35	47	18	G3/4"	23		50
10 S07	200	25	30250	1150	1675	190	270	1200	132	6XM 20X30	M39X2	56	100	35	47	18	G3/4"	17	561	50
10 S07	200	40	30250	1150	1675	190	270	1293	132	6XM 20X30	M39X2	56	100	35	47	18	G3/4"	17	561	50
10 S07	250	12	31700	1150	1675	170		1559	132	6XM 20X30	M39X2	56	100	35	47	18	G3/4"	23		50
10 S07	300	25	30250	1150	1675	190	270	1464	132	6XM 20X30	M39X2	56	100	35	47	18	G3/4"	17	761	50
10 S07	300	40	30250	1150	1675	190	270	1557	132	6XM 20X30	M39X2	56	100	35	47	18	G3/4"	17	761	50
10 S07	400	40	30250	1150	1675	190	270	1821	132	6XM 20X30	M39X2	56	100	35	47	18	G3/4"	17	961	50

# dkPOWER type S 7 bar series, 0.7-100 tons

# dkPOWER tip S 10 bar serisi, 0.7-100 ton

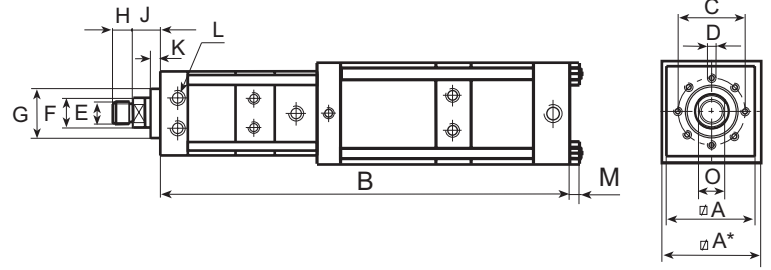
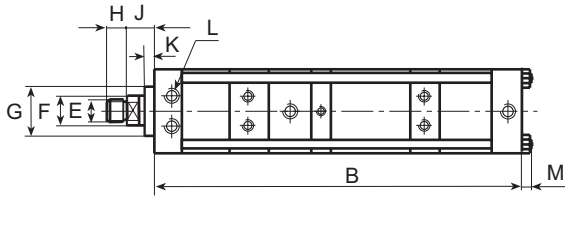


Table general dimensions  
Genel ölçü tablosu

Measurements in mm / Ölçüler mm dir

Type	Total Stroke	power stroke	max.force	fast approach force	retracting force	A	A*	B	C	D	E	F	G	H	J	K	L	M	N	O
Tip	Toplam strok	Güç stroğu	max.kuvvet	Hızlı ilerleme stroğu	Geri dönüş kuvveti	mm	mm	mm	mm	mm	mm	mm	mm	mm	mm	mm	mm	mm	mm	mm
10 S08	70	6	49400	1250	2120	200		885	150	8XM 20X30	M42X2	63	115	40	52	25	G3/4"	31		55
10 S08	70	12	49400	1250	2120	200		1005	150	8XM 20X30	M42X2	63	115	40	52	25	G3/4"	31		55
10 S08	100	6	49400	1250	2120	200		1003	150	8XM 20X30	M42X2	63	115	40	52	25	G3/4"	31		55
10 S08	100	12	49400	1250	2120	200		1123	150	8XM 20X30	M42X2	63	115	40	52	25	G3/4"	31		55
10 S08	100	25	46800	1250	2120	220	270	1066	150	8XM 20X30	M42X2	63	115	40	52	25	G3/4"	17	367	55
10 S08	150	6	49400	1250	2120	200		1199	150	8XM 20X30	M42X2	63	115	40	52	25	G3/4"	31		55
10 S08	150	12	49400	1250	2120	200		1319	150	8XM 20X30	M42X2	63	115	40	52	25	G3/4"	31		55
10 S08	150	25	46800	1250	2120	220	270	1216	150	8XM 20X30	M42X2	63	115	40	52	25	G3/4"	17	467	55
10 S08	150	40	46800	1250	2120	220	325	1202	150	8XM 20X30	M42X2	63	115	40	52	25	G3/4"	21	467	55
10 S08	200	6	49400	1250	2120	200		1396	150	8XM 20X30	M42X2	63	115	40	52	25	G3/4"	31		55
10 S08	200	12	49400	1250	2120	200		1516	150	8XM 20X30	M42X2	63	115	40	52	25	G3/4"	31		55
10 S08	200	25	46800	1250	2120	220	270	1366	150	8XM 20X30	M42X2	63	115	40	52	25	G3/4"	17	567	55
10 S08	200	40	46800	1250	2120	220	325	1337	150	8XM 20X30	M42X2	63	115	40	52	25	G3/4"	21	567	55
10 S08	300	25	46800	1250	2120	220	270	1666	150	8XM 20X30	M42X2	63	115	40	52	25	G3/4"	17	767	55
10 S08	300	40	46800	1250	2120	220	325	1607	150	8XM 20X30	M42X2	63	115	40	52	25	G3/4"	21	767	55
10 S08	400	40	46800	1250	2120	220	325	1877	150	8XM 20X30	M42X2	63	115	40	52	25	G3/4"	21	967	55

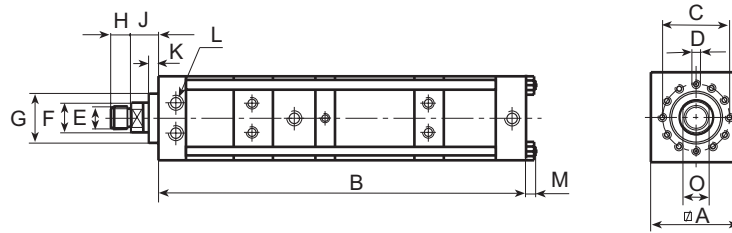


Table general dimensions  
Genel ölçü tablosu

Measurements in mm / Ölçüler mm dir

Type	Total Stroke	power stroke	max.force	fast approach force	retracting force	A	A*	B	C	D	E	F	G	H	J	K	L	M	N	O
Tip	Toplam strok	Güç stroğu	max.kuvvet	Hızlı ilerleme stroğu	Geri dönüş kuvveti	mm	mm	mm	mm	mm	mm	mm	mm	mm	mm	mm	mm	mm	mm	mm
10 S09	100	15	76800	2240	3900	310		1291	200	12XM 24X40	M64X2	100	150	60	60	25	G 1"	31		85
10 S09	150	15	76800	2240	3900	310		1495	200	12XM 24X40	M64X2	100	150	60	60	25	G 1"	31		85
10 S09	200	18	76800	2240	3900	310		1760	200	12XM 24X40	M64X2	100	150	60	60	25	G 1"	31		85
10 S09	250	25	76800	2240	3900	310		2065	200	12XM 24X40	M64X2	100	150	60	60	25	G 1"	31		85
10 S09	300	25	76800	2240	3900	310		2268	200	12XM 24X40	M64X2	100	150	60	60	25	G 1"	31		85
10 S10	100	12	96650	2240	3900	310		1291	200	12XM 24X40	M64X2	100	150	60	60	25	G 1"	31		85
10 S10	150	12	96650	2240	3900	310		1495	200	12XM 24X40	M64X2	100	150	60	60	25	G 1"	31		85
10 S10	200	15	96650	2240	3900	310		1760	200	12XM 24X40	M64X2	100	150	60	60	25	G 1"	31		85
10 S10	250	20	96650	2240	3900	310		2065	200	12XM 24X40	M64X2	100	150	60	60	25	G 1"	31		85
10 S10	300	20	96650	2240	3900	310		2268	200	12XM 24X40	M64X2	100	150	60	60	25	G 1"	31		85



The power is stated  $\pm 5\%$  Güç değişimi  $\pm 5\%$

DK OTOMASYON Ltd. Şti. Head office: Gazlıcalar cad. No:62/B 16220 Bursa •TURKEY Tel: +90.224. 444 00 75 Fax: +90.224. 253 06 90

# dkPOWER type SK 10 bar series, 0.7-50 tons

# dkPOWER tip SK 10 bar serisi, 0.7-50 ton

## type SK

Total strokes  
Power strokes  
Force  
Operating pressure  
Special execution

## typ SK

Toplam strok : 50-400mm  
Güç stroğu : 5-40mm  
Kuvvet : 0.7-50 ton  
Operasyon basıncı : 2-10 bar  
Özel uygulama basıncı : Full forced reached with 10 bar operating pressure  
Max güce 10 bar'lık hava basıncında ulaşır  
Possible Mümkün

Power stroke limitation (optional) Güç stroğu kısıtlaması (opsiyonel)

### Sample order / Sipariş örneği

10 SK01 - 100 - 10

Power stroke  
Total stroke  
Type  
Max. working pressure

Güç stroğu  
Toplam strok  
Tip  
Max. çalışma basıncı

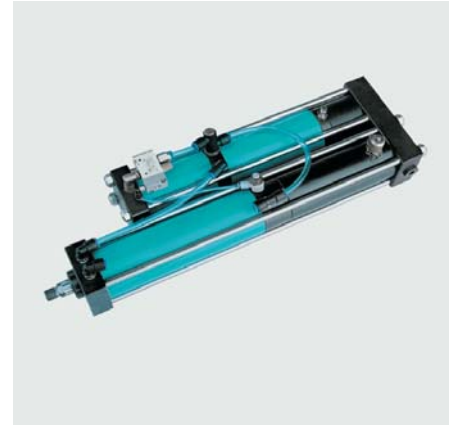
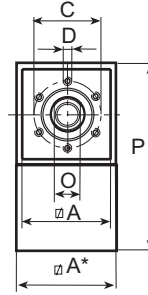
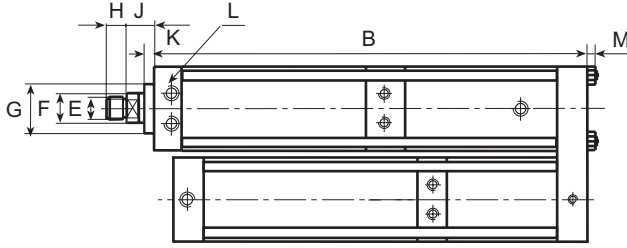


Table general dimensions  
Genel ölçü tablosu

Measurements in mm / Ölçüler mm dir

Type Tip	Total Stroke Toplam strok mm	power stroke Güç stroğu mm	max.force max.kuvvet (daN)	fast approach force Hızlı ilerleme stroğu (daN)	retracting force Geni dönüş kuvveti (daN)	A	A*	B	C	D	E	F	G	H	J	K	L	M	P	O	R
10 SK01	100	5	700	95	100	50		331	40	6XM 6X12	M12X1.5	16	30	12	24	10	G1/8"	7	105	14	
10 SK01	100	10	700	95	100	50	60	321	40	6XM 6X12	M12X1.5	16	30	12	24	10	G1/8"	7	115	14	
10 SK01	100	20	1050	95	100	50	70	326	40	6XM 6X12	M12X1.5	16	30	12	24	10	G1/8"	7	125	14	
10 SK01	150	5	700	95	100	50		431	40	6XM 6X12	M12X1.5	16	30	12	24	10	G1/8"	7	105	14	
10 SK01	150	11	700	95	100	50	60	421	40	6XM 6X12	M12X1.5	16	30	12	24	10	G1/8"	7	115	14	
10 SK01	150	20	1050	95	100	50	70	421	40	6XM 6X12	M12X1.5	16	30	12	24	10	G1/8"	7	125	14	
10 SK02	100	5	1210	144	167	60		359	40	6XM 6X12	M12X1.5	16	30	12	24	10	G1/8"	9	125	14	
10 SK02	100	10	1325	144	167	60	70	347	40	6XM 6X12	M12X1.5	16	30	12	24	10	G1/8"	9	134	14	
10 SK02	100	14	1210	144	167	60	85	348	40	6XM 6X12	M12X1.5	16	30	12	24	10	G1/8"	9	150	14	
10 SK02	150	5	1210	144	167	60		442	40	6XM 6X12	M12X1.5	16	30	12	24	10	G1/8"	9	125	14	
10 SK02	150	11	1325	144	167	60	70	442	40	6XM 6X12	M12X1.5	16	30	12	24	10	G1/8"	9	134	14	
10 SK02	150	20	1210	144	167	60	85	442	40	6XM 6X12	M12X1.5	16	30	12	24	10	G1/8"	9	150	14	
10 SK03	100	8	2100	250	265	70		369	54	6XM 8X12	M16X1.5	20	40	15	26	10	G1/4"	9	145	17	
10 SK03	100	12	2070	250	265	70	85	384	54	6XM 8X12	M16X1.5	20	40	15	26	10	G1/4"	9	160	17	
10 SK03	100	20	2070	250	265	70	110	378	54	6XM 8X12	M16X1.5	20	40	15	26	10	G1/4"	9	185	17	
10 SK03	150	8	2100	250	265	70		449	54	6XM 8X12	M16X1.5	20	40	15	26	10	G1/4"	9	145	17	
10 SK03	150	12	2070	250	265	70	85	449	54	6XM 8X12	M16X1.5	20	40	15	26	10	G1/4"	9	160	17	
10 SK03	150	20	2070	250	265	70	110	449	54	6XM 8X12	M16X1.5	20	40	15	26	10	G1/4"	9	185	17	
10 SK03	200	8	2100	250	265	70		549	54	6XM 8X12	M16X1.5	20	40	15	26	10	G1/4"	9	145	17	
10 SK03	200	12	2070	250	265	70	85	549	54	6XM 8X12	M16X1.5	20	40	15	26	10	G1/4"	9	160	17	
10 SK03	200	20	2070	250	265	70	110	549	54	6XM 8X12	M16X1.5	20	40	15	26	10	G1/4"	9	185	17	
10 SK04	100	5	4100	320	340	85		419	64	6XM 8X15	M22X2	30	50	20	28.5	10	G3/8"	11	175	24	
10 SK04	100	10	4100	320	340	85	110	412	64	6XM 8X15	M22X2	30	50	20	28.5	10	G3/8"	11	200	24	
10 SK04	100	20	4100	320	340	85	135	429	64	6XM 8X15	M22X2	30	50	20	28.5	10	G3/8"	11	225	24	
10 SK04	150	5	4100	320	340	85		465	64	6XM 8X15	M22X2	30	50	20	28.5	10	G3/8"	11	175	24	
10 SK04	150	10	4100	320	340	85	110	460	64	6XM 8X15	M22X2	30	50	20	28.5	10	G3/8"	11	200	24	

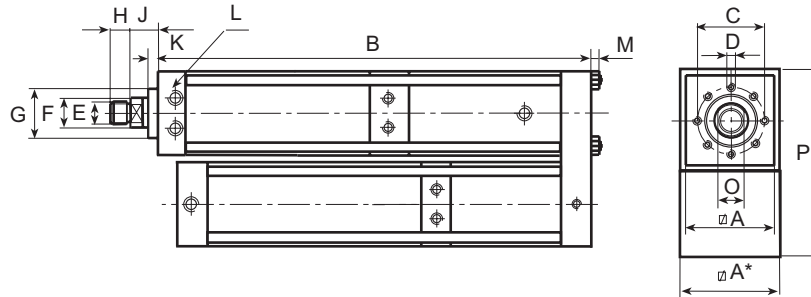
# dkPOWER type SK 10 bar series, 0.7-50 tons

# dkPOWER tip SK 10 bar serisi, 0.7-50 ton

Table general dimensions  
Genel ölçü tablosu

Measurements in mm / Ölçüler mm dir

Type Tip	Total Stroke Toplam strok	power stroke Güç stroğu	max.force max.kuvvet	fast approach force Hızlı ilerleme stroğu	retracting force Geri dönüş kuvveti	A	A*	B	C	D	E	F	G	H	J	K	L	M	P	O	R
10 SK04	150	20	4100	320	340	85	135	460	64	6XM 8X15	M22X2	30	50	20	28.5	10	G3/8"	11	225	24	
10 SK04	200	5	4100	320	340	85		560	64	6XM 8X15	M22X2	30	50	20	28.5	10	G3/8"	11	175	24	
10 SK04	200	10	4100	320	340	85	110	560	64	6XM 8X15	M22X2	30	50	20	28.5	10	G3/8"	11	200	24	
10 SK04	200	20	4100	320	340	85	135	560	64	6XM 8X15	M22X2	30	50	20	28.5	10	G3/8"	11	225	24	
10 SK05	100	5	7840	560	595	110		467	88	6XM 10X16	M30X2	45	70	25	35	10	G1/2"	13	225	36	
10 SK05	100	10	7840	560	595	110	135	467	88	6XM 10X16	M30X2	45	70	25	35	10	G1/2"	13	250	36	
10 SK05	100	20	8200	560	595	110	170	520	88	6XM 10X16	M30X2	45	70	25	35	10	G1/2"	13	285	36	
10 SK05	150	5	7840	560	595	110		517	88	6XM 10X16	M30X2	45	70	25	35	10	G1/2"	13	225	36	
10 SK05	150	10	7840	560	595	110	135	499	88	6XM 10X16	M30X2	45	70	25	35	10	G1/2"	13	250	36	
10 SK05	150	20	8200	560	595	110	170	540	88	6XM 10X16	M30X2	45	70	25	35	10	G1/2"	13	285	36	
10 SK05	200	5	7840	560	595	110		599	88	6XM 10X16	M30X2	45	70	25	35	10	G1/2"	13	225	36	
10 SK05	200	10	7840	560	595	110	135	599	88	6XM 10X16	M30X2	45	70	25	35	10	G1/2"	13	250	36	
10 SK05	200	20	8200	560	595	110	170	599	88	6XM 10X16	M30X2	45	70	25	35	10	G1/2"	13	285	36	
10 SK05	250	10	7840	560	595	110	135	699	88	6XM 10X16	M30X2	45	70	25	35	10	G1/2"	13	250	36	
10 SK05	250	20	8200	560	595	110	170	699	88	6XM 10X16	M30X2	45	70	25	35	10	G1/2"	13	285	36	
10 SK06	100	5	15000	800	975	135		522	100	6XM 16X25	M30X2	50	75	25	36	15	G1/2"	17	275	41	
10 SK06	100	10	15750	800	975	135	170	557	100	6XM 16X25	M30X2	50	75	25	36	15	G1/2"	17	310	41	
10 SK06	100	20	15000	800	975	135	200	496	100	6XM 16X25	M30X2	50	75	25	36	15	G1/2"	17	336	41	
10 SK06	150	5	15000	800	975	135		585	100	6XM 16X25	M30X2	50	75	25	36	15	G1/2"	17	275	41	
10 SK06	150	10	15750	800	975	135	170	596	100	6XM 16X25	M30X2	50	75	25	36	15	G1/2"	17	310	41	
10 SK06	150	20	15000	800	975	135	200	521	100	6XM 16X25	M30X2	50	75	25	36	15	G1/2"	17	336	41	
10 SK06	200	5	15000	800	975	135		648	100	6XM 16X25	M30X2	50	75	25	36	15	G1/2"	17	275	41	
10 SK06	200	10	15750	800	975	135	170	636	100	6XM 16X25	M30X2	50	75	25	36	15	G1/2"	17	310	41	
10 SK06	200	20	15000	800	975	135	200	621	100	6XM 16X25	M30X2	50	75	25	36	15	G1/2"	17	336	41	
10 SK06	250	5	15000	800	975	135		721	100	6XM 16X25	M30X2	50	75	25	36	15	G1/2"	17	275	41	
10 SK06	250	10	15750	800	975	135	170	721	100	6XM 16X25	M30X2	50	75	25	36	15	G1/2"	17	310	41	
10 SK06	250	20	15000	800	975	135	200	721	100	6XM 16X25	M30X2	50	75	25	36	15	G1/2"	17	336	41	
10 SK07	100	10	30250	1150	1675	170	270	584	132	6XM 20X30	M39X2	56	100	35	47	18	G3/4"	21	446	50	
10 SK07	150	10	30250	1150	1675	170	270	596	132	6XM 20X30	M39X2	56	100	35	47	18	G3/4"	21	446	50	
10 SK07	150	20	30250	1150	1675	170	270	658	132	6XM 20X30	M39X2	56	100	35	47	18	G3/4"	21	446	50	53
10 SK07	200	10	30250	1150	1675	170	270	639	132	6XM 20X30	M39X2	56	100	35	47	18	G3/4"	21	446	50	
10 SK07	200	20	30250	1150	1675	170	270	690	132	6XM 20X30	M39X2	56	100	35	47	18	G3/4"	21	446	50	53
10 SK07	300	20	30250	1150	1675	170	270	839	132	6XM 20X30	M39X2	56	100	35	47	18	G3/4"	21	446	50	53
10 SK07	400	20	30250	1150	1675	170	270	1039	132	6XM 20X30	M39X2	56	100	35	47	18	G3/4"	21	446	50	53



Measurements in mm / Ölçüler mm dir

Table general dimensions  
Genel ölçü tablosu

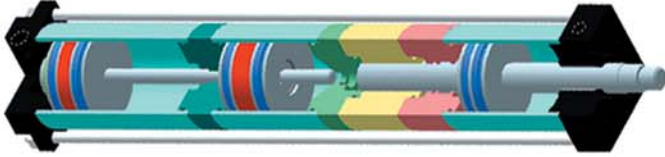
Type Tip	Total Stroke Toplam strok	power stroke Güç stroğu	max.force max.kuvvet	fast approach force Hızlı ilerleme stroğu	retracting force Geri dönüş kuvveti	A	A*	B	C	D	E	F	G	H	J	K	L	M	P	O	R
10 SK08	100	10	46800	1250	2120	200	270	665	150	8XM 20X30	M42X2	63	115	40	52	25	G3/4"	23	476	55	
10 SK08	100	20	46800	1250	2120	200	325	709	150	8XM 20X30	M42X2	63	115	40	52	25	G3/4"	23	534	55	42
10 SK08	200	10	46800	1250	2120	200	270	765	150	8XM 20X30	M42X2	63	115	40	52	25	G3/4"	23	476	55	
10 SK08	200	20	46800	1250	2120	200	325	779	150	8XM 20X30	M42X2	63	115	40	52	25	G3/4"	23	534	55	42
10 SK08	300	10	46800	1250	2120	200	270	865	150	8XM 20X30	M42X2	63	115	40	52	25	G3/4"	23	476	55	
10 SK08	300	20	46800	1250	2120	200	325	865	150	8XM 20X30	M42X2	63	115	40	52	25	G3/4"	23	534	55	42



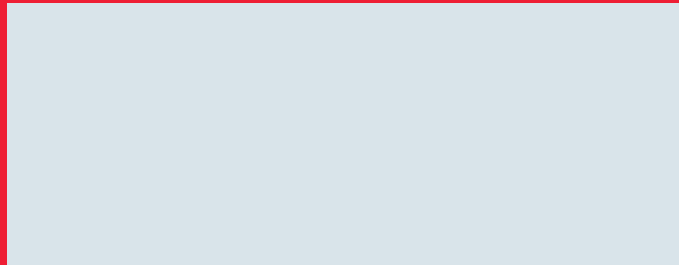
The power is stated  $\pm 5\%$

Güç değişimi  $\pm 5\%$

DK OTOMASYON İTİ. ŞTİ. Head office: Gazıcılar cad. No:62/B 16220 Bursa •TURKEY Tel: +90.224. 444 00 75 Fax: +90.224. 253 06 90



## Distributor



If you do not find a suitable type in our standard program,  
we are ready to built a special appliance according to your requirments.



### **DK OTOMASYON sistemler makina san. tic. ltd. Őti.**

Head office : Gazcılar cad. No:62/B 16220 Bursa • TURKEY

Tel : +90.224. 444 00 75

Fax : +90.224. 253 06 90

Factory : BeŐevler sanayi sitesi 34. blok No :71-92  
16149 Bursa • TURKEY

Tel : +90.224. 441 22 92

Fax : +90.224 441 22 93

[www.dk-power.com](http://www.dk-power.com) e-mail:[dk@dk-power.com](mailto:dk@dk-power.com)

Note : DK OTOMASYON reserves the right to carry out any modification to dimensions without prior notice.