

dkPOWER type S 10 bar series, 0.7-100 tons

dkPOWER tip S 10 bar serisi, 0.7-100 ton

type S

Total strokes	Toplam strok	: 50-400mm
Power strokes	Güç stroğu	: 5-40mm
Force	Kuvvet	: 0.7-100 ton
Operating pressure	Operasyon basıncı	: 2-10 bar
Special execution	Özel uygulama basıncı	: Full forced reached with 10 bar operating pressure Max güce 10 bar'lık hava basıncında ulaşır

Power stroke limitation (optional) Güç stroğu kısıtlaması (opsiyonel) : Possible Mümkün

Sample order / Sipariş örneği

10 S01 - 100 - 10

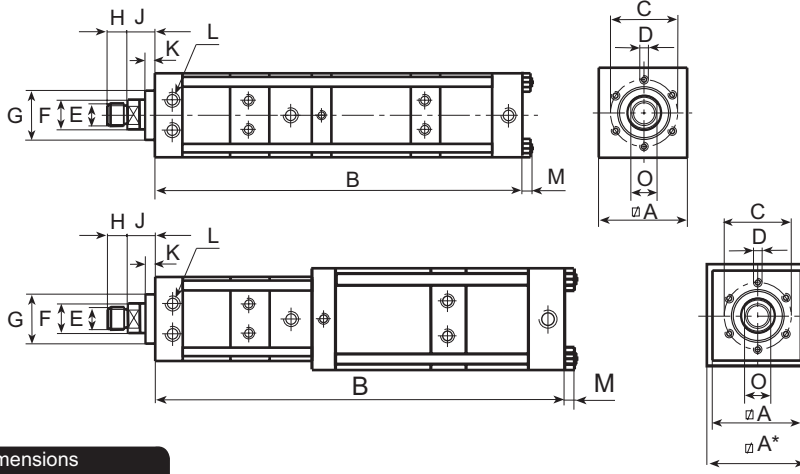
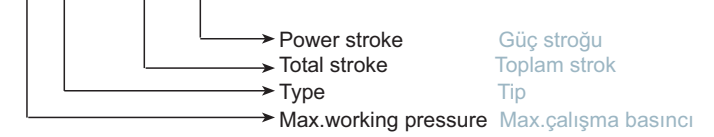


Table general dimensions
Genel ölçü tablosu

Measurements in mm / Ölçüler mm dir

Type	Total Stroke	power stroke	max.force	fast approach force	retracting force	A	A"	B	C	D	E	F	G	H	J	K	L	M	N	O
Tip	Toplam strok	Güç stroğu	max.kuvvet	Hızlı ilerleme stroğu	Geri dönüş kuvveti															
	mm	mm	(daN)	(daN)	(daN)															
10 S01	50	6	700	95	100	50		413	40	6XM 6X12	M12X1.5	16	30	12	24	10	G1/8"			14
10 S01	50	12	1050	95	100	60		453	40	6XM 6X12	M12X1.5	16	30	12	24	10	G1/8"			14
10 S01	100	6	700	95	100	50		553	40	6XM 6X12	M12X1.5	16	30	12	24	10	G1/8"			14
10 S01	100	12	1050	95	100	60		579	40	6XM 6X12	M12X1.5	16	30	12	24	10	G1/8"			14
10 S02	50	6	1210	144	166	60		480	40	6XM 6X12	M12X1.5	16	30	12	24	10	G1/8"			14
10 S02	50	12	1325	144	166	70		477	40	6XM 6X12	M12X1.5	16	30	12	24	10	G1/8"			14
10 S02	100	6	1210	144	166	60		626	40	6XM 6X12	M12X1.5	16	30	12	24	10	G1/8"			14
10 S02	100	12	1325	144	166	70		607	40	6XM 6X12	M12X1.5	16	30	12	24	10	G1/8"			14
10 S02	150	6	1210	144	166	60		772	40	6XM 6X12	M12X1.5	16	30	12	24	10	G1/8"			14
10 S02	150	12	1325	144	166	70		737	40	6XM 6X12	M12X1.5	16	30	12	24	10	G1/8"			14
10 S03	50	6	2100	250	265	70		468	54	6XM 8X12	M16X1.5	20	40	15	26	10	G1/4"			17
10 S03	50	12	2100	250	265	70		505	54	6XM 8X12	M16X1.5	20	40	15	26	10	G1/4"			17
10 S03	50	25	2070	250	265	70	85	564	54	6XM 8X12	M16X1.5	20	40	15	26	10	G1/4"		205	17
10 S03	100	6	2100	250	265	70		600	54	6XM 8X12	M16X1.5	20	40	15	26	10	G1/4"			17
10 S03	100	12	2100	250	265	70		637	54	6XM 8X12	M16X1.5	20	40	15	26	10	G1/4"			17
10 S03	100	25	2070	250	265	70	85	686	54	6XM 8X12	M16X1.5	20	40	15	26	10	G1/4"		305	17
10 S03	100	40	2070	250	265	70	85	751	54	6XM 8X12	M16X1.5	20	40	15	26	10	G1/4"		305	17
10 S03	100	60	2070	250	265	70	110	733	54	6XM 8X12	M16X1.5	20	40	15	26	10	G1/4"		305	17
10 S03	150	6	2100	250	265	70		732	54	6XM 8X12	M16X1.5	20	40	15	26	10	G1/4"			17
10 S03	150	12	2100	250	265	70		769	54	6XM 8X12	M16X1.5	20	40	15	26	10	G1/4"			17
10 S03	150	25	2070	250	265	70	85	808	54	6XM 8X12	M16X1.5	20	40	15	26	10	G1/4"		405	17
10 S03	150	40	2070	250	265	70	85	873	54	6XM 8X12	M16X1.5	20	40	15	26	10	G1/4"		405	1
10 S03	150	60	2070	250	265	70	110	845	54	6XM 8X12	M16X1.5	20	40	15	26	10	G1/4"		405	7
10 S03	150	80	2070	250	265	70	110	894	54	6XM 8X12	M16X1.5	20	40	15	26	10	G1/4"		405	17



The power is stated $\pm 5\%$ Güç değişimi $\pm 5\%$

DK OTOMASYON İtđ. Őti. Head office: Gazzcılar cad. No:62/B 16220 Bursa •TURKEY Tel: +90.224. 444 00 75 Fax: +90.224. 253 06 90

dkPOWER type S 10 bar series, 0.7-100 tons

dkPOWER tip S 10 bar serisi, 0.7-100 ton

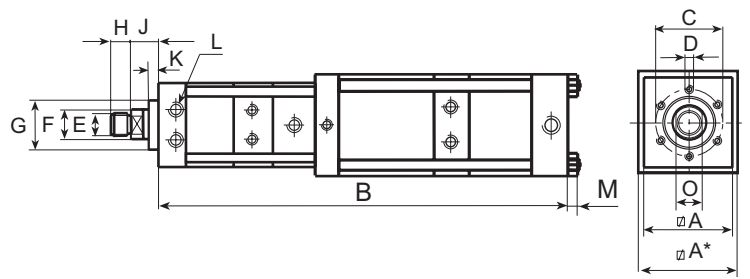
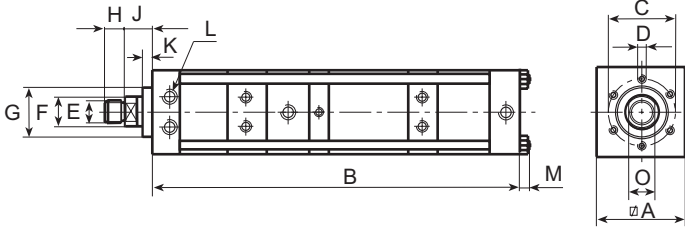


Table general dimensions
Genel ölçü tablosu

Measurements in mm / Ölçüler mm dir

Type	Total Stroke	power stroke	max.force	fast approach force	retracting force	A	A"	B	C	D	E	F	G	H	J	K	L	M	N	O
Tip	Toplam strok	Güç stroğu	max.kuvvet	Hızlı ilerleme stroğu	Gen dönüş kuvveti															
	mm	mm	(daN)	(daN)	(daN)															
10 S03	200	6	2100	250	265	70		864	54	6XM 8X12	M16X1.5	20	40	15	26	10	G1/4"			17
10 S03	200	12	2100	250	265	70		901	54	6XM 8X12	M16X1.5	20	40	15	26	10	G1/4"			17
10 S03	200	25	2070	250	265	70	85	930	54	6XM 8X12	M16X1.5	20	40	15	26	10	G1/4"		505	17
10 S03	200	40	2070	250	265	70	85	995	54	6XM 8X12	M16X1.5	20	40	15	26	10	G1/4"		505	17
10 S03	200	60	2070	250	265	70	110	957	54	6XM 8X12	M16X1.5	20	40	15	26	10	G1/4"		505	17
10 S03	200	80	2070	250	265	70	110	1006	54	6XM 8X12	M16X1.5	20	40	15	26	10	G1/4"		505	17
10 S03	250	40	2070	250	265	70	85	1119	54	6XM 8X12	M16X1.5	20	40	15	26	10	G1/4"		605	17
10 S03	250	80	2070	250	265	70	110	1118	54	6XM 8X12	M16X1.5	20	40	15	26	10	G1/4"		605	17
10 S04	50	6	4100	320	340	85		539	64	6XM 8X15	M22X2	30	50	20	28.5	10	G3/8"			24
10 S04	50	12	4100	320	340	85		593	64	6XM 8X15	M22X2	30	50	20	28.5	10	G3/8"			24
10 S04	70	25	4100	320	340	90	110	669	64	6XM 8X15	M22X2	30	50	20	28.5	10	G3/8"		251	24
10 S04	100	6	4100	320	340	85		685	64	6XM 8X15	M22X2	30	50	20	28.5	10	G3/8"			24
10 S04	100	12	4100	320	340	85		739	64	6XM 8X15	M22X2	30	50	20	28.5	10	G3/8"			24
10 S04	100	25	4100	320	340	90	110	745	64	6XM 8X15	M22X2	30	50	20	28.5	10	G3/8"		311	24
10 S04	100	40	4100	320	340	90	135	736	64	6XM 8X15	M22X2	30	50	20	28.5	10	G3/8"	13	311	24
10 S04	150	6	4100	320	340	85		831	64	6XM 8X15	M22X2	30	50	20	28.5	10	G3/8"			24
10 S04	150	12	4100	320	340	85		885	64	6XM 8X15	M22X2	30	50	20	28.5	10	G3/8"			24
10 S04	150	25	4100	320	340	90	110	871	64	6XM 8X15	M22X2	30	50	20	28.5	10	G3/8"		411	24
10 S04	150	40	4100	320	340	90	135	853	64	6XM 8X15	M22X2	30	50	20	28.5	10	G3/8"	13	411	24
10 S04	200	6	4100	320	340	85		977	64	6XM 8X15	M22X2	30	50	20	28.5	10	G3/8"			24
10 S04	200	12	4100	320	340	85		1031	64	6XM 8X15	M22X2	30	50	20	28.5	10	G3/8"			24
10 S04	200	25	4100	320	340	90	110	997	64	6XM 8X15	M22X2	30	50	20	28.5	10	G3/8"		511	24
10 S04	200	40	4100	320	340	90	135	969	64	6XM 8X15	M22X2	30	50	20	28.5	10	G3/8"	13	511	24
10 S04	200	50	4100	320	340	90	135	1034	64	6XM 8X15	M22X2	30	50	20	28.5	10	G3/8"	13	511	24
10 S04	250	12	4100	320	340	85		1177	64	6XM 8X15	M22X2	30	50	20	28.5	10	G3/8"			24
10 S04	250	25	4100	320	340	90	110	1123	64	6XM 8X15	M22X2	30	50	20	28.5	10	G3/8"		611	24
10 S04	300	60	4100	320	340	90	135	1268	64	6XM 8X15	M22X2	30	50	20	28.5	10	G3/8"	13	711	24
10 S04	400	60	4100	320	340	90	135	1502	64	6XM 8X15	M22X2	30	50	20	28.5	10	G3/8"	13	911	24
10 S05	50	6	7840	560	595	110		605	88	6XM 10X16	M30X2	45	70	25	35	10	G1/2"			36
10 S05	50	12	7840	560	595	110		664	88	6XM 10X16	M30X2	45	70	25	35	10	G1/2"			36
10 S05	50	25	7840	560	595	115	135	692	88	6XM 10X16	M30X2	45	70	25	35	10	G1/2"	13	241	36
10 S05	100	6	7840	560	595	110		755	88	6XM 10X16	M30X2	45	70	25	35	10	G1/2"			36
10 S05	100	12	7840	560	595	110		814	88	6XM 10X16	M30X2	45	70	25	35	10	G1/2"			36
10 S05	100	25	7840	560	595	115	135	824	88	6XM 10X16	M30X2	45	70	25	35	10	G1/2"	13	341	36
10 S05	100	40	8200	560	595	115	170	855	88	6XM 10X16	M30X2	45	70	25	35	10	G1/2"	17	341	36
10 S05	150	6	7840	560	595	110		905	88	6XM 10X16	M30X2	45	70	25	35	10	G1/2"			36
10 S05	150	12	7840	560	595	110		964	88	6XM 10X16	M30X2	45	70	25	35	10	G1/2"			36
10 S05	150	25	7840	560	595	115	135	956	88	6XM 10X16	M30X2	45	70	25	35	10	G1/2"	13	441	36
10 S05	150	40	8200	560	595	115	170	975	88	6XM 10X16	M30X2	45	70	25	35	10	G1/2"	17	441	36
10 S05	200	6	7840	560	595	110		1055	88	6XM 10X16	M30X2	45	70	25	35	10	G1/2"			36



The power is stated $\pm 5\%$ Güç değişimi $\pm 5\%$

DK OTOMASYON İtđ. Şti. Head office: Gazcılar cad. No:62/B 16220 Bursa •TURKEY Tel: +90.224. 444 00 75 Fax: +90.224. 253 06 90

dkPOWER type S 10 bar series, 0.7-100 tons

dkPOWER tip S 10 bar serisi, 0.7-100 ton

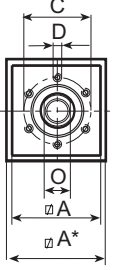
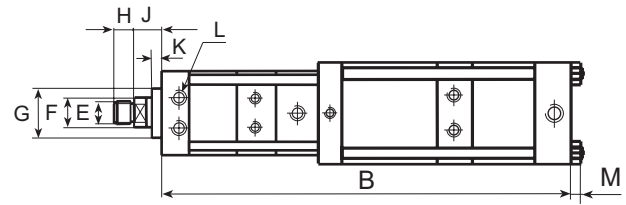
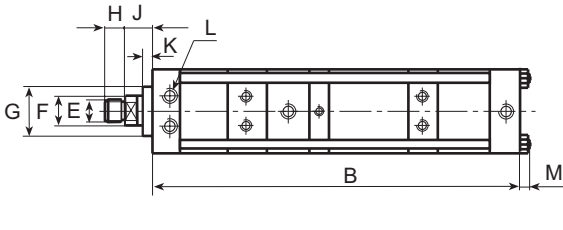


Table general dimensions
Genel ölçü tablosu

Measurements in mm / Ölçüler mm dir

Type	Total Stroke	power stroke	max.force	fast approach force	retracting force	A		B	C	D	E	F	G	H	J	K	L	M	N	O
Tip	Toplam strok	Güç stroğu	max.kuvvet	Hızlı ilerleme stroğu	Geri dönüş kuvveti	A	A*	B	C	D	E	F	G	H	J	K	L	M	N	O
	mm	mm	(daN)	(daN)	(daN)															
10 S05	200	12	7840	560	595	110		1114	88	6XM 10X16	M30X2	45	70	25	35	10	G1/2"			36
10 S05	200	25	7840	560	595	115	135	1088	88	6XM 10X16	M30X2	45	70	25	35	10	G1/2"	13	541	36
10 S05	200	40	8200	560	595	115	170	1095	88	6XM 10X16	M30X2	45	70	25	35	10	G1/2"	17	541	36
10 S05	200	60	8200	560	595	115	170	1175	88	6XM 10X16	M30X2	45	70	25	35	10	G1/2"	17	541	36
10 S05	250	12	7840	560	595	110		1264	88	6XM 10X16	M30X2	45	70	25	35	10	G1/2"			36
10 S05	250	25	7840	560	595	115	135	1220	88	6XM 10X16	M30X2	45	70	25	35	10	G1/2"	13	641	36
10 S05	250	40	8200	560	595	115	170	1215	88	6XM 10X16	M30X2	45	70	25	35	10	G1/2"	17	641	36
10 S05	300	60	8200	560	595	115	170	1415	88	6XM 10X16	M30X2	45	70	25	35	10	G1/2"	17	741	36
10 S05	400	60	8200	560	595	115	170	1655	88	6XM 10X16	M30X2	45	70	25	35	10	G1/2"	17	941	36
10 S06	50	6	15000	800	975	135		652	100	6XM 16X25	M30X2	50	75	25	36	15	G1/2"	17		41
10 S06	50	12	15000	800	975	135		724	100	6XM 16X25	M30X2	50	75	25	36	15	G1/2"	17		41
10 S06	100	6	15000	800	975	135		814	100	6XM 16X25	M30X2	50	75	25	36	15	G1/2"	17		41
10 S06	100	12	15000	800	975	135		887	100	6XM 16X25	M30X2	50	75	25	36	15	G1/2"	17		41
10 S06	100	25	15750	800	975	140	170	943	100	6XM 16X25	M30X2	50	75	25	36	15	G1/2"	17	353	41
10 S06	150	6	15000	800	975	135		977	100	6XM 16X25	M30X2	50	75	25	36	15	G1/2"	17		41
10 S06	150	12	15000	800	975	135		1050	100	6XM 16X25	M30X2	50	75	25	36	15	G1/2"	17		41
10 S06	150	25	15750	800	975	140	170	1081	100	6XM 16X25	M30X2	50	75	25	36	15	G1/2"	17	453	41
10 S06	150	40	15000	800	975	140	200	1116	100	6XM 16X25	M30X2	50	75	25	36	15	G1/2"	17	453	41
10 S06	200	6	15000	800	975	135		1140	100	6XM 16X25	M30X2	50	75	25	36	15	G1/2"	17		41
10 S06	200	12	15000	800	975	135		1213	100	6XM 16X25	M30X2	50	75	25	36	15	G1/2"	17		41
10 S06	200	25	15750	800	975	140	170	1219	100	6XM 16X25	M30X2	50	75	25	36	15	G1/2"	17	553	41
10 S06	200	40	15000	800	975	140	200	1246	100	6XM 16X25	M30X2	50	75	25	36	15	G1/2"	17	553	41
10 S06	250	12	15000	800	975	135		1376	100	6XM 16X25	M30X2	50	75	25	36	15	G1/2"	17		41
10 S06	250	25	15750	800	975	140	170	1357	100	6XM 16X25	M30X2	50	75	25	36	15	G1/2"	17	653	41
10 S06	250	40	15000	800	975	140	200	1376	100	6XM 16X25	M30X2	50	75	25	36	15	G1/2"	17	653	41
10 S06	300	25	15750	800	975	140	170	1495	100	6XM 16X25	M30X2	50	75	25	36	15	G1/2"	17	753	41
10 S06	300	40	15000	800	975	140	200	1506	100	6XM 16X25	M30X2	50	75	25	36	15	G1/2"	17	753	41
10 S07	50	6	31700	1150	1675	170		751	132	6XM 20X30	M39X2	56	100	35	47	18	G3/4"	23		50
10 S07	70	12	31700	1150	1675	170		919	132	6XM 20X30	M39X2	56	100	35	47	18	G3/4"	23		50
10 S07	100	6	31700	1150	1675	170		929	132	6XM 20X30	M39X2	56	100	35	47	18	G3/4"	23		50
10 S07	100	12	31700	1150	1675	170		1025	132	6XM 20X30	M39X2	56	100	35	47	18	G3/4"	23		50
10 S07	100	25	30250	1150	1675	190	270	936	132	6XM 20X30	M39X2	56	100	35	47	18	G3/4"	17	361	50
10 S07	150	6	31700	1150	1675	170		1107	132	6XM 20X30	M39X2	56	100	35	47	18	G3/4"	23		50
10 S07	150	12	31700	1150	1675	170		1203	132	6XM 20X30	M39X2	56	100	35	47	18	G3/4"	23		50
10 S07	150	25	30250	1150	1675	190	270	1068	132	6XM 20X30	M39X2	56	100	35	47	18	G3/4"	17	461	50
10 S07	200	6	31700	1150	1675	170		1285	132	6XM 20X30	M39X2	56	100	35	47	18	G3/4"	23		50
10 S07	200	12	31700	1150	1675	170		1381	132	6XM 20X30	M39X2	56	100	35	47	18	G3/4"	23		50
10 S07	200	25	30250	1150	1675	190	270	1200	132	6XM 20X30	M39X2	56	100	35	47	18	G3/4"	17	561	50
10 S07	200	40	30250	1150	1675	190	270	1293	132	6XM 20X30	M39X2	56	100	35	47	18	G3/4"	17	561	50
10 S07	250	12	31700	1150	1675	170		1559	132	6XM 20X30	M39X2	56	100	35	47	18	G3/4"	23		50
10 S07	300	25	30250	1150	1675	190	270	1464	132	6XM 20X30	M39X2	56	100	35	47	18	G3/4"	17	761	50
10 S07	300	40	30250	1150	1675	190	270	1557	132	6XM 20X30	M39X2	56	100	35	47	18	G3/4"	17	761	50
10 S07	400	40	30250	1150	1675	190	270	1821	132	6XM 20X30	M39X2	56	100	35	47	18	G3/4"	17	961	50



The power is stated $\pm 5\%$

Güç değişimi $\pm 5\%$

DK OTOMASYON Ltd. Şti. Head office: Gazlıca cad. No:62/B 16220 Bursa •TURKEY Tel: +90.224. 444 00 75 Fax: +90.224. 253 06 90

dkPOWER type S 7 bar series, 0.7-100 tons

dkPOWER tip S 10 bar serisi, 0.7-100 ton

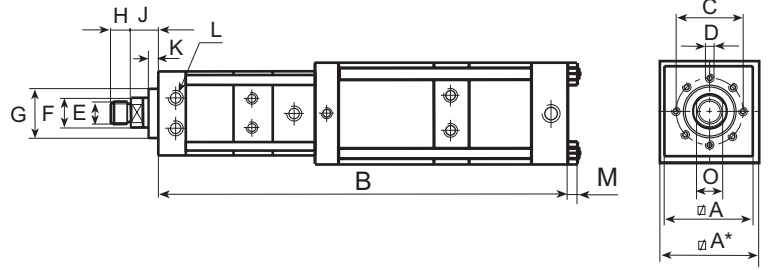
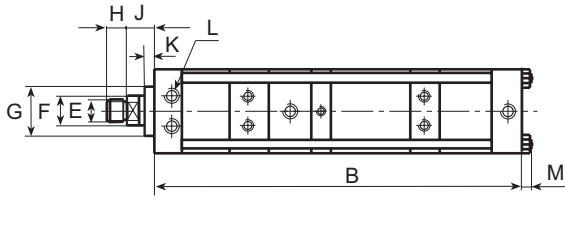


Table general dimensions
Genel ölçü tablosu

Measurements in mm / Ölçüler mm dir

Type	Total Stroke	power stroke	max.force	fast approach force	retracting force	A	A*	B	C	D	E	F	G	H	J	K	L	M	N	O
Tip	Toplam strok	Güç stroğu	max.kuvvet	Hızlı ilerleme stroğu	Geri dönüş kuvveti	mm	mm	mm	mm	mm	mm	mm	mm	mm	mm	mm	mm	mm	mm	mm
10 S08	70	6	49400	1250	2120	200		885	150	8XM 20X30	M42X2	63	115	40	52	25	G3/4"	31		55
10 S08	70	12	49400	1250	2120	200		1005	150	8XM 20X30	M42X2	63	115	40	52	25	G3/4"	31		55
10 S08	100	6	49400	1250	2120	200		1003	150	8XM 20X30	M42X2	63	115	40	52	25	G3/4"	31		55
10 S08	100	12	49400	1250	2120	200		1123	150	8XM 20X30	M42X2	63	115	40	52	25	G3/4"	31		55
10 S08	100	25	46800	1250	2120	220	270	1066	150	8XM 20X30	M42X2	63	115	40	52	25	G3/4"	17	367	55
10 S08	150	6	49400	1250	2120	200		1199	150	8XM 20X30	M42X2	63	115	40	52	25	G3/4"	31		55
10 S08	150	12	49400	1250	2120	200		1319	150	8XM 20X30	M42X2	63	115	40	52	25	G3/4"	31		55
10 S08	150	25	46800	1250	2120	220	270	1216	150	8XM 20X30	M42X2	63	115	40	52	25	G3/4"	17	467	55
10 S08	150	40	46800	1250	2120	220	325	1202	150	8XM 20X30	M42X2	63	115	40	52	25	G3/4"	21	467	55
10 S08	200	6	49400	1250	2120	200		1396	150	8XM 20X30	M42X2	63	115	40	52	25	G3/4"	31		55
10 S08	200	12	49400	1250	2120	200		1516	150	8XM 20X30	M42X2	63	115	40	52	25	G3/4"	31		55
10 S08	200	25	46800	1250	2120	220	270	1366	150	8XM 20X30	M42X2	63	115	40	52	25	G3/4"	17	567	55
10 S08	200	40	46800	1250	2120	220	325	1337	150	8XM 20X30	M42X2	63	115	40	52	25	G3/4"	21	567	55
10 S08	300	25	46800	1250	2120	220	270	1666	150	8XM 20X30	M42X2	63	115	40	52	25	G3/4"	17	767	55
10 S08	300	40	46800	1250	2120	220	325	1607	150	8XM 20X30	M42X2	63	115	40	52	25	G3/4"	21	767	55
10 S08	400	40	46800	1250	2120	220	325	1877	150	8XM 20X30	M42X2	63	115	40	52	25	G3/4"	21	967	55

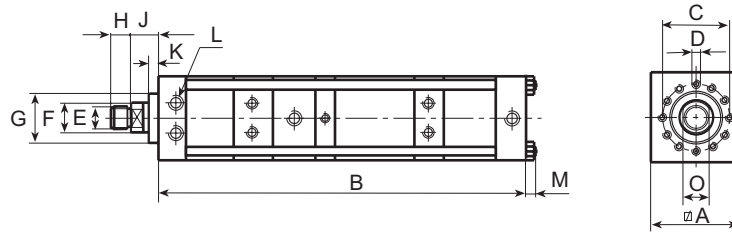


Table general dimensions
Genel ölçü tablosu

Measurements in mm / Ölçüler mm dir

Type	Total Stroke	power stroke	max.force	fast approach force	retracting force	A	A*	B	C	D	E	F	G	H	J	K	L	M	N	O
Tip	Toplam strok	Güç stroğu	max.kuvvet	Hızlı ilerleme stroğu	Geri dönüş kuvveti	mm	mm	mm	mm	mm	mm	mm	mm	mm	mm	mm	mm	mm	mm	mm
10 S09	100	15	76800	2240	3900	310		1291	200	12XM 24X40	M64X2	100	150	60	60	25	G 1"	31		85
10 S09	150	15	76800	2240	3900	310		1495	200	12XM 24X40	M64X2	100	150	60	60	25	G 1"	31		85
10 S09	200	18	76800	2240	3900	310		1760	200	12XM 24X40	M64X2	100	150	60	60	25	G 1"	31		85
10 S09	250	25	76800	2240	3900	310		2065	200	12XM 24X40	M64X2	100	150	60	60	25	G 1"	31		85
10 S09	300	25	76800	2240	3900	310		2268	200	12XM 24X40	M64X2	100	150	60	60	25	G 1"	31		85
10 S10	100	12	96650	2240	3900	310		1291	200	12XM 24X40	M64X2	100	150	60	60	25	G 1"	31		85
10 S10	150	12	96650	2240	3900	310		1495	200	12XM 24X40	M64X2	100	150	60	60	25	G 1"	31		85
10 S10	200	15	96650	2240	3900	310		1760	200	12XM 24X40	M64X2	100	150	60	60	25	G 1"	31		85
10 S10	250	20	96650	2240	3900	310		2065	200	12XM 24X40	M64X2	100	150	60	60	25	G 1"	31		85
10 S10	300	20	96650	2240	3900	310		2268	200	12XM 24X40	M64X2	100	150	60	60	25	G 1"	31		85



The power is stated $\pm 5\%$ Güç deęişimi $\pm 5\%$

DK OTOMASYON ltd. Şti. Head office: Gazlıcalar cad. No:62/B 16220 Bursa •TURKEY Tel: +90.224. 444 00 75 Fax: +90.224. 253 06 90