

dkPOWER type SK 6 bar series, 0.6-50 tons

dkPOWER tip SK 6 bar serisi, 0.6-100 ton

type SK

Total strokes
Power strokes
Force
Operating pressure
Special execution

tip SK

Toplam strok : 50-400mm
Güç stroğu : 5-40mm
Kuvvet : 0.5-50 ton
Operasyon basıncı : 2- 6 bar
Özel uygulama basıncı : Full forced reached with 6 bar operating pressure
Max güce 6 bar'lık hava basıncında ulaşır

Power stroke limitation (optional) : Possible
Güç stroğu kısıtlaması (opsiyonel) : Mümkün

Sample order / Sipariş örneği

06 SK01 - 100 - 10

Power stroke
Total stroke
Type
Max.working pressure
Güç stroğu
Toplam strok
Tip
Max.çalışma basıncı

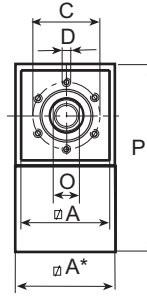
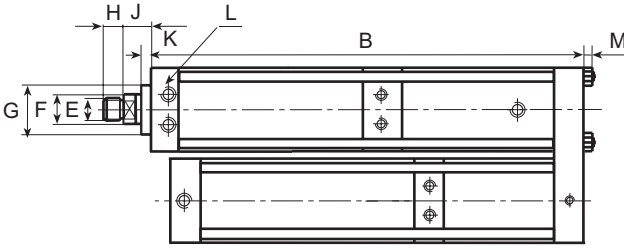


Table general dimensions
Genel ölçü tablosu

Measurements in mm / Ölçüler mm dir

Type Tip	Total Stroke Toplam strok	power stroke Güç stroğu	max.force max.kuvvet	fast approach force Hızlı ilerleme stroğu (daN)	retracting force Geri dönüş kuvveti (daN)	A	A"	B	C	D	E	F	G	H	J	K	L	M	P	O	R
06 SK01	100	5	670	55	58	50		331	40	6XM 6X12	M12X1.5	16	30	12	24	10	G1/8"	105	14		
06 SK01	100	10	670	55	58	50		353	40	6XM 6X12	M12X1.5	16	30	12	24	10	G1/8"	105	14		
06 SK01	100	15	600	55	58	50	60	335	40	6XM 6X12	M12X1.5	16	30	12	24	10	G1/8"	115	14		
06 SK01	150	10	670	55	58	50		421	40	6XM 6X12	M12X1.5	16	30	12	24	10	G1/8"	105	14		
06 SK01	150	15	600	55	58	50	60	421	40	6XM 6X12	M12X1.5	16	30	12	24	10	G1/8"	115	14		
06 SK02	100	5	1050	83	97	60		389	40	6XM 6X12	M12X1.5	16	30	12	24	10	G1/8"	125	14		
06 SK02	100	10	1050	83	97	60		372	40	6XM 6X12	M12X1.5	16	30	12	24	10	G1/8"	125	14		
06 SK02	100	15	1070	83	97	60	70	388	40	6XM 6X12	M12X1.5	16	30	12	24	10	G1/8"	134	14		
06 SK02	150	10	1050	83	97	60		442	40	6XM 6X12	M12X1.5	16	30	12	24	10	G1/8"	125	14		
06 SK02	150	15	1070	83	97	60	70	442	40	6XM 6X12	M12X1.5	16	30	12	24	10	G1/8"	134	14		
06 SK03	100	4	1810	144	154	70		349	54	6XM 8X12	M16X1.5	20	40	15	26	10	G1/4"	145	17		
06 SK03	100	10	1660	144	154	70	85	402	54	6XM 8X12	M16X1.5	20	40	15	26	10	G1/4"	160	17		
06 SK03	100	15	2000	144	154	70	110	414	54	6XM 8X12	M16X1.5	20	40	15	26	10	G1/4"	185	17		
06 SK03	150	10	1660	144	154	70	85	449	54	6XM 8X12	M16X1.5	20	40	15	26	10	G1/4"	160	17		
06 SK03	150	15	2000	144	154	70	110	449	54	6XM 8X12	M16X1.5	20	40	15	26	10	G1/4"	185	17		
06 SK03	200	10	1660	144	154	70	85	549	54	6XM 8X12	M16X1.5	20	40	15	26	10	G1/4"	160	17		
06 SK03	200	15	2000	144	154	70	110	549	54	6XM 8X12	M16X1.5	20	40	15	26	10	G1/4"	185	17		
06 SK04	100	5	3330	187	200	85		454	64	6XM 8X15	M22X2	30	50	20	28.5	10	G3/8"	175	24		
06 SK04	100	10	4070	187	200	85	110	488	64	6XM 8X15	M22X2	30	50	20	28.5	10	G3/8"	200	24		
06 SK04	100	20	3600	187	200	85	135	450	64	6XM 8X15	M22X2	30	50	20	28.5	10	G3/8"	13	225	2	51
06 SK04	150	5	3330	187	200	85		500	64	6XM 8X15	M22X2	30	50	20	28.5	10	G3/8"	175	4		
06 SK04	150	10	4070	187	200	85	110	514	64	6XM 8X15	M22X2	30	50	20	28.5	10	G3/8"	200	24		
06 SK04	150	20	3600	187	200	85	135	470	64	6XM 8X15	M22X2	30	50	20	28.5	10	G3/8"	13	225	24	51
06 SK04	200	5	3330	187	200	85		560	64	6XM 8X15	M22X2	30	50	20	28.5	10	G3/8"	175	24		
06 SK04	200	10	4070	187	200	85	110	560	64	6XM 8X15	M22X2	30	50	20	28.5	10	G3/8"	200	24		
06 SK04	200	20	3600	187	200	85	135	560	64	6XM 8X15	M22X2	30	50	20	28.5	10	G3/8"	13	225	24	51

The power is stated $\pm 5\%$

Güç değişimi $\pm 5\%$



DK OTOMASYON Ltd. Şti. Head office: Gazlılar cad. No:62/B 16220 Bursa •TURKEY Tel: +90.224. 444 00 75 Fax: +90.224. 253 06 90

dkPOWER type SK 6 bar series, 0.6-50 tons

dkPOWER tip SK 6 bar serisi, 0.6-100 ton

Table general dimensions
Genel ölçü tablosu

Measurements in mm / Ölçüler mm dir

Type Tip	Total Stroke Toplam strok mm	power stroke Güç stroğu mm	max.force max.kuvvet (daN)	fast approach force Hızlı ilerleme stroğu (daN)	retracting force Geri dönüş kuvveti (daN)	A	A"	B	C	D	E	F	G	H	J	K	L	M	P	O	R
06 SK05	100	5	7820	324	344	110		531	88	6XM 10X16	M30X2	45	70	25	35	10	G1/2"		225	36	
06 SK05	100	10	6910	324	344	110	135	526	88	6XM 10X16	M30X2	45	70	25	35	10	G1/2"	13	250	36	
06 SK05	100	20	7230	324	344	110	170	540	88	6XM 10X16	M30X2	45	70	25	35	10	G1/2"	17	285	36	63
06 SK05	150	5	7820	324	344	110		581	88	6XM 10X16	M30X2	45	70	25	35	10	G1/2"		225	36	
06 SK05	150	10	6910	324	344	110	135	558	88	6XM 10X16	M30X2	45	70	25	35	10	G1/2"	13	250	36	
06 SK05	150	20	7230	324	344	110	170	560	88	6XM 10X16	M30X2	45	70	25	35	10	G1/2"	17	285	36	63
06 SK05	200	5	7820	324	344	110		631	88	6XM 10X16	M30X2	45	70	25	35	10	G1/2"		225	36	
06 SK05	200	10	6910	324	344	110	135	599	88	6XM 10X16	M30X2	45	70	25	35	10	G1/2"	13	250	36	
06 SK05	200	20	7230	324	344	110	170	599	88	6XM 10X16	M30X2	45	70	25	35	10	G1/2"	17	285	36	63
06 SK05	250	10	6910	324	344	110	135	699	88	6XM 10X16	M30X2	45	70	25	35	10	G1/2"	13	250	36	
06 SK05	250	20	7230	324	344	110	170	699	88	6XM 10X16	M30X2	45	70	25	35	10	G1/2"	17	285	36	63
06 SK06	100	5	13380	460	565	135		585	100	6XM 16X25	M30X2	50	75	25	36	15	G1/2"		275	41	
06 SK06	100	10	14000	460	565	135	170	591	100	6XM 16X25	M30X2	50	75	25	36	15	G1/2"	17	310	41	53
06 SK06	100	20	13380	460	565	135	200	558	100	6XM 16X25	M30X2	50	75	25	36	15	G1/2"	17	336	41	
06 SK06	150	5	13380	460	565	135		648	100	6XM 16X25	M30X2	50	75	25	36	15	G1/2"		275	41	
06 SK06	150	10	14000	460	565	135	170	631	100	6XM 16X25	M30X2	50	75	25	36	15	G1/2"	17	310	41	53
06 SK06	150	20	13380	460	565	135	200	572	100	6XM 16X25	M30X2	50	75	25	36	15	G1/2"	17	336	41	
06 SK06	200	5	13380	460	565	135		711	100	6XM 16X25	M30X2	50	75	25	36	15	G1/2"		275	41	
06 SK06	200	10	14000	460	565	135	170	671	100	6XM 16X25	M30X2	50	75	25	36	15	G1/2"	17	310	41	53
06 SK06	200	20	13380	460	565	135	200	621	100	6XM 16X25	M30X2	50	75	25	36	15	G1/2"	17	336	41	
06 SK06	250	5	13380	460	565	135		774	100	6XM 16X25	M30X2	50	75	25	36	15	G1/2"		275	41	
06 SK06	250	10	14000	460	565	135	170	721	100	6XM 16X25	M30X2	50	75	25	36	15	G1/2"	17	310	41	53
06 SK06	250	20	13380	460	565	135	200	721	100	6XM 16X25	M30X2	50	75	25	36	15	G1/2"	17	336	41	
06 SK07	100	10	30650	675	970	170	270	609	132	6XM 20X30	M39X2	56	100	35	47	18	G3/4"	17	446	50	42
06 SK07	150	10	30650	675	970	170	270	641	132	6XM 20X30	M39X2	56	100	35	47	18	G3/4"	17	446	50	42
06 SK07	150	20	30650	675	970	170	270	752	132	6XM 20X30	M39X2	56	100	35	47	18	G3/4"	17	446	50	152
06 SK07	200	10	30650	675	970	170	270	673	132	6XM 20X30	M39X2	56	100	35	47	18	G3/4"	17	446	50	42
06 SK07	200	20	30650	675	970	170	270	784	132	6XM 20X30	M39X2	56	100	35	47	18	G3/4"	17	446	50	152
06 SK07	300	20	30650	675	970	170	270	849	132	6XM 20X30	M39X2	56	100	35	47	18	G3/4"	17	446	50	152
06 SK07	400	20	30650	675	970	170	270	1039	132	6XM 20X30	M39X2	56	100	35	47	18	G3/4"	17	446	50	42

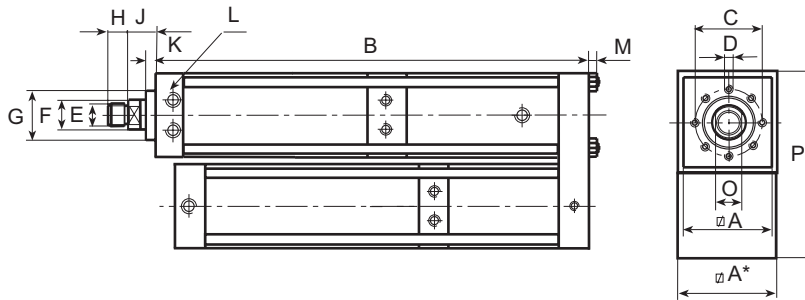


Table general dimensions
Genel ölçü tablosu

Measurements in mm / Ölçüler mm dir

Type Tip	Total Stroke Toplam strok mm	power stroke Güç stroğu mm	max.force max.kuvvet (daN)	fast approach force Hızlı ilerleme stroğu (daN)	retracting force Geri dönüş kuvveti (daN)	A	A"	B	C	D	E	F	G	H	J	K	L	M	P	O	R
06 SK08	100	10	47600	725	1225	200	270	727	150	8XM 20X30	M42X2	63	115	40	52	25	G3/4"	23	476	55	85
06 SK08	100	20	47600	725	1225	200	325	769	150	8XM 20X30	M42X2	63	115	40	52	25	G3/4"	23	534	55	154
06 SK08	200	10	47600	725	1225	200	270	827	150	8XM 20X30	M42X2	63	115	40	52	25	G3/4"	23	476	55	85
06 SK08	200	20	47600	725	1225	200	325	839	150	8XM 20X30	M42X2	63	115	40	52	25	G3/4"	23	534	55	154
06 SK08	300	10	47600	725	1225	200	270	927	150	8XM 20X30	M42X2	63	115	40	52	25	G3/4"	23	476	55	85
06 SK08	300	20	47600	725	1225	200	325	909	150	8XM 20X30	M42X2	63	115	40	52	25	G3/4"	23	534	55	154