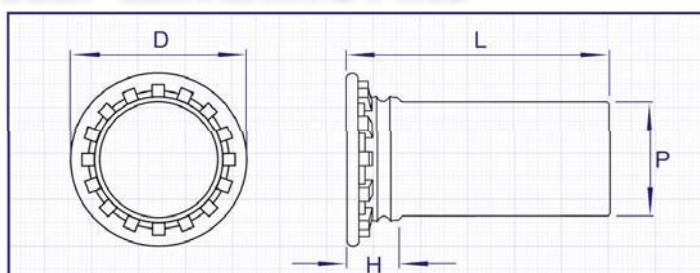


SELF CLINCHING PINS



visit: www.npfasteners.com/nfh-pin.shtml



**TYPE
NFH**

SPECIFICATION

*TO SPECIAL ORDER

Pin Diameter P	H Max	Min Sheet Thickness	Hole Size in Panel +0.08 -0.0	D +/- 0.4	Min C/L to edge of panel
3mm	2.3	1.0	3.5	5.3	6.4
4mm	2.3	1.0	4.1	6.0	7.1
5mm*	2.5	1.0	5.5	7.5	7.6
6mm*	2.7	1.6	6.5	8.0	7.9

LENGTHS

Pin Diameter P	Length (L) +/- 0.4								
3mm	6	8	10	12	15	-	-	-	-
4mm	6	8	10	12	15	18	20	-	-
5mm*	-	8	10	12	15	18	20	22	-
6mm*	-	-	10	12	15	18	20	22	25

INFORMATION

MATERIALS

Carbon Steel, 300 Series Stainless Steel, (Aluminium (AL) To Special Order).

FINISHES

Bright Zinc Trivalent Clear Passivate (ZI), (Other Platings Available To Special Order).

NOTES Maximum hardness of parent material: Steel parts - 80HRB : Stainless Steel parts - 70HRB : Aluminium parts - 50HRB. Please note that Stainless Steel parts cannot usually be successfully installed into Stainless Steel Sheet. (See Self Clinch technical notes page for further details).

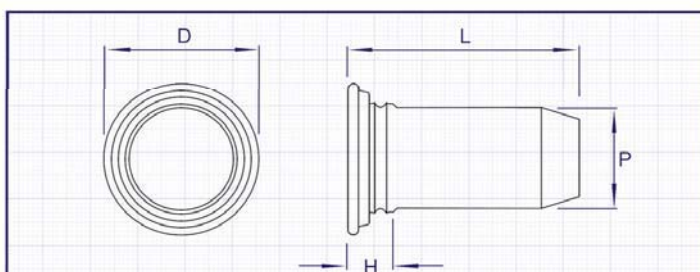
PART NUMBER EXAMPLE:

Type / Diameter / Length / Finish =

NFH - 4mm - 10 - ZI

(Flush Head Pin, 4mm Ø 10mm, Steel, BZP)

SELF CLINCHING TAPERED PINS



visit: www.npfasteners.com/ntp.shtml



**TYPE
NTP**

SPECIFICATION

*TO SPECIAL ORDER

Pin Diameter P	H Max	Min Sheet Thickness	Hole Size in Panel +0.08 -0.0	D +/- 0.4	Min C/L to edge of panel
3mm	2.3	1.0	3.5	5.2	6.4
4mm	2.3	1.0	4.5	6.12	7.1
5mm*	2.3	1.0	5.5	7.19	7.6
6mm*	2.3	1.0	6.5	8.13	7.9

LENGTHS

Pin Diameter P	Length (L) +/- 0.4				
3mm	8	10	12	16	20
4mm	8	10	12	16	20
5mm*	-	10	12	16	20
6mm*	-	10	12	16	20

INFORMATION

MATERIALS

300 Series Stainless Steel (A2).

NOTES: Maximum hardness of parent material : 70HRB. Please note that Stainless Steel parts cannot usually be successfully installed into Stainless Steel Sheet. (See Self Clinch technical notes page for further details).

PART NUMBER EXAMPLE:

Type / Diameter / Length /

Finish =

NTP - 4mm - 10 - A2

(Tapered Pin, 4mm x 10mm, Stainless Steel)